

# OEM Series: Cable-Extension Position Transducer

## Incremental Encoder Output

Ranges: 0-2000 to 0-2500 mm

Compact Size • OEM Applications

# A250

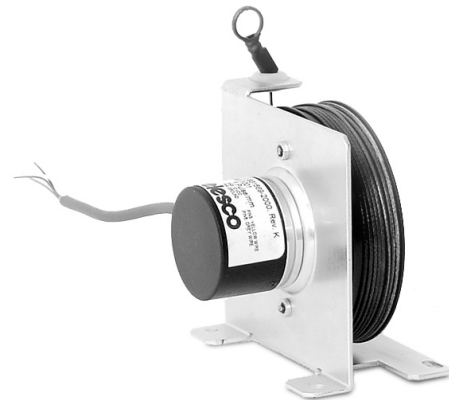
### Specification Summary:

**GENERAL**  
 Full Stroke Ranges.....0-2000 & 0-2500 mm  
 Spool Circumference.....250 mm  
 Output Signal.....incremental (quadrature) encoder  
 Accuracy.....+0.04% of F.S.  
 Repeatability.....+0.02% of F.S.  
 Resolution.....0.4 to 10 pulses per mm\*  
 Measuring Cable.....0.034-in dia. nylon-coated stainless steel  
 Optional Measuring Cable.....0.040-in. dia. thermoplastic  
 Sensor.....incremental optical encoder  
 Frame Material.....zinc-plated steel  
 Weight, max.....1 lb.

**ELECTRICAL**  
 Encoder Output Driver Options.....TTL-CMOS, open collector and line-driver  
 Output Channels.....A, B and index (with and without compliments)\*  
 Input Voltage.....4.5 to 26.4 VDC\*  
 Current Consumption.....80 mA max.\*  
 Sink Current.....20 mA max.\*

**ENVIRONMENTAL**  
 Operating Temperature.....-10°C to +70°C  
 Storage Temperature.....-30°C to +80°C  
 Humidity.....RH 85%, no condensation  
 Vibration.....10 ~ 55 Hz / 1.5 mm 2 hr.  
 Shock.....30 G 11ms (X,Y, Z each 3 times)

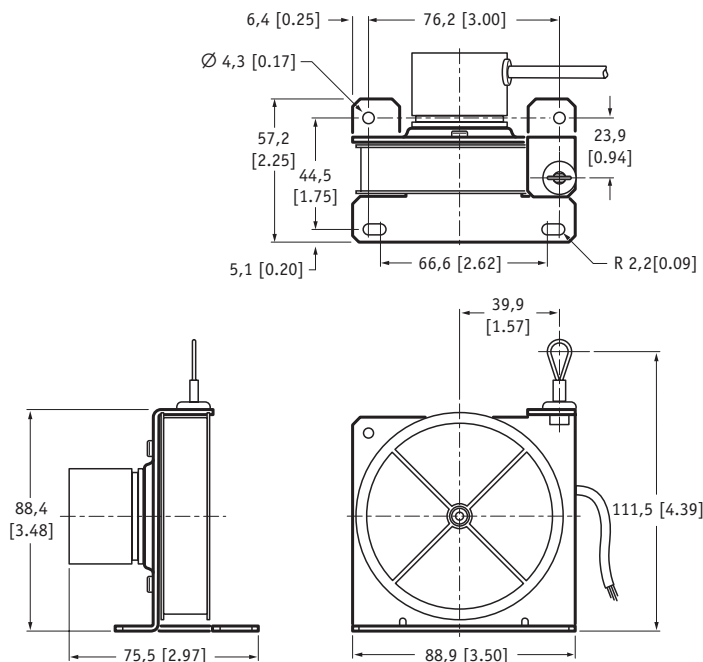
\*specifications may vary with configuration, please consult factory



The A250 Cable-Extension Transducer is an optical encoder-based compact, flexible and highly accurate position feedback transducer.

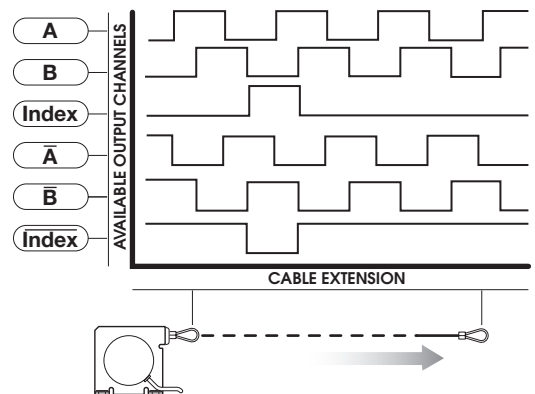
The standard A250 can be simply modified to meet specific OEM requirements. Just about any encoder type can be used for your specific requirement. Designs are available for new applications or as drop-in replacements of current assemblies. You can specify custom mounting, custom electrical connections and even customer-specified life testing. Quantities are available as small as 100 units.

### Outline Drawing



ALL DIMENSIONS ARE IN MM [INCHES]

### Output Signal



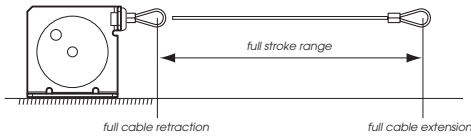
Celeco Transducer Products, Inc.  
 20630 Plummer Street • Chatsworth, CA 91311  
 tel: 800.423.5483 • +1.818.701.2750 • fax: +1.818.701.2799

**celesco**  
 celesco.com • info@celesco.com

**Order Form • Application Worksheet**

**Application** please provide a brief description of application. include exact stroke range, velocity of stroke and estimated number of cycles per year.

**Full Stroke Range** select available range or specify complete requirements



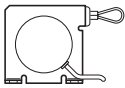
- 2000 mm
- 2500 mm
- other:

**Measuring Cable**

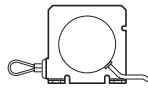


- 0.034" dia. nylon-coated stainless steel
- 0.040" dia. thermoplastic

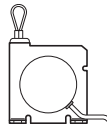
**Measuring Cable Exit**



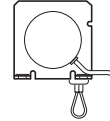
front



rear



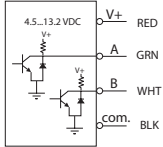
up



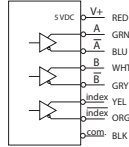
down

**Encoder**

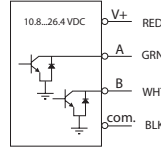
TTL - CMOS compatible



line driver



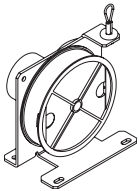
open collector



**Resolution**

- 0.4 pulses per mm
- 4 pulses per mm
- 8 pulses per mm
- 10 pulses per mm

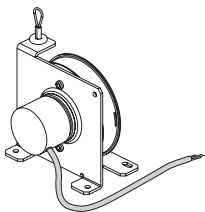
**Enclosure** select no cover or specify custom enclosure requirements



no cover

custom enclosure:

**Electrical Connection**



without connector

with connector

cable length:

connector

manufacturer:

manufacturer's part no.:

version: 1.0 last updated: April 14, 2005