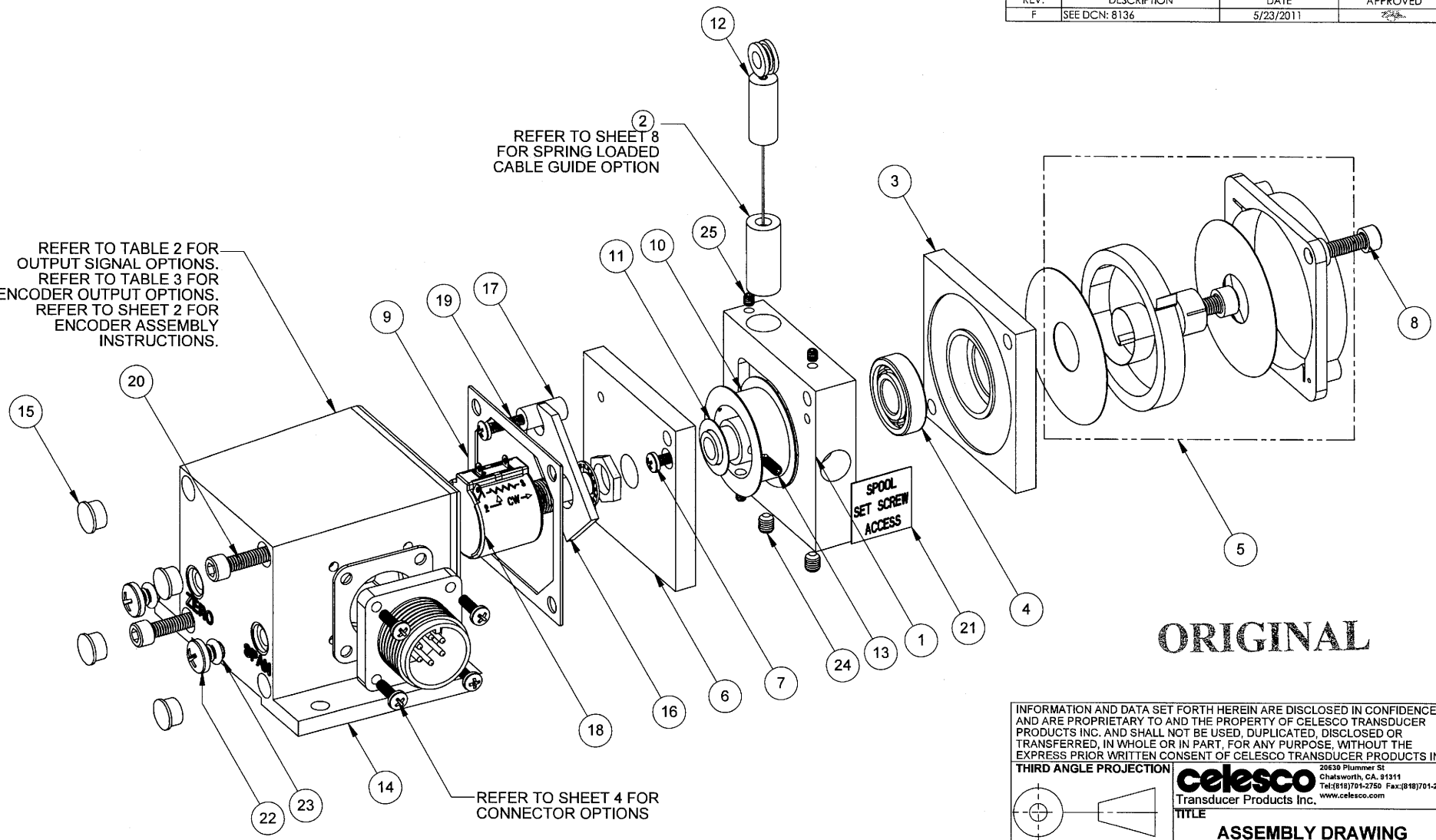


REVISIONS			
REV.	DESCRIPTION	DATE	APPROVED
F	SEE DCN: 8136	5/23/2011	<i>[Signature]</i>

REFER TO TABLE 2 FOR OUTPUT SIGNAL OPTIONS. REFER TO TABLE 3 FOR ENCODER OUTPUT OPTIONS. REFER TO SHEET 2 FOR ENCODER ASSEMBLY INSTRUCTIONS.

REFER TO SHEET 8 FOR SPRING LOADED CABLE GUIDE OPTION

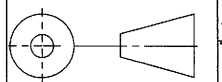
REFER TO SHEET 4 FOR CONNECTOR OPTIONS



ORIGINAL

INFORMATION AND DATA SET FORTH HEREIN ARE DISCLOSED IN CONFIDENCE AND ARE PROPRIETARY TO AND THE PROPERTY OF CELESCO TRANSDUCER PRODUCTS INC. AND SHALL NOT BE USED, DUPLICATED, DISCLOSED OR TRANSFERRED, IN WHOLE OR IN PART, FOR ANY PURPOSE, WITHOUT THE EXPRESS PRIOR WRITTEN CONSENT OF CELESCO TRANSDUCER PRODUCTS INC.

THIRD ANGLE PROJECTION



celesco 20630 Plummer St
Chatsworth, CA 91311
Tel: (818) 701-2750 Fax: (818) 701-2799
www.celesco.com

TITLE
**ASSEMBLY DRAWING
PT1 SERIES**

APPROVALS		DATE
DRAWN	E. GARCIA	7.8.2008
CHKD	<i>[Signature]</i>	

SIZE	CODE IDENT. NO.	DWG. NO.	REV
B	52158	PS-145	F

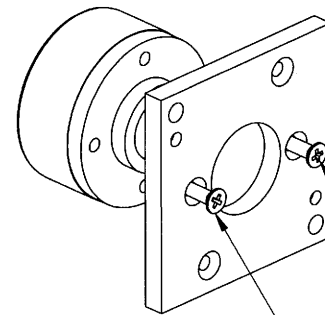
DO NOT SCALE DRAWING

SCALE: 1:1 SHEET 1 OF 10

TABLE 1

	2 IN	5 IN	10 IN	15 IN	20 IN	25 IN	30 IN	40 IN	50 IN	625 MM	1250 MM		
A	COVER FOR M6 OPTION 9679851-0001, 9678210-0000 (PT1E)										9678210-0000		
	COVER FOR C25 OPTION 9679852-0001, 9678210-0002 (PT1E)										9678210-0002		
	COVER FOR MC4 OPTION 9679850-0001, 9678210-0001 (PT1E)										9678210-0001		
B	FRAME	9673966-0006	9673967-0002	9673966-0003	9673966-0004	9676285-0001	9673967-0002	9673966-0004	9678285-0001	9673967-0002	9678655-0002	9678655-0001	
	SPOOL	9673965-0001	9678341-0004	9673965-0001	9673965-0002	9673965-0003	9678341-0004	9673965-0002	9673965-0003	9678341-0004			
	ENCODER SPOOL							9678656-0001			9678656-0002	9678656-0004	9678656-0001
	ENCODER PLATE							9678657-0000			9678657-0000		
	CABLE GUIDE	PT1A SERIES: 9676724-0003, PT1E SERIES: 9678658-0000, SPRING LOADED CABLE GUIDE: 9603966-0000, PT1E WITH SPRING LOADED GUIDE: 9678875-0000											
C	POTENTIOMER 500 Ω	1 TURN 9083000-0052		5 TURN 9085000-0004			10 TURN 9085000-0003						
	POTENTIOMER 1K Ω	1 TURN 9083000-0053		5 TURN 9085000-0011			10 TURN 9085000-0006						
	POTENTIOMER 5K Ω	1 TURN 9080000-0001		5 TURN 9085000-0013			10 TURN 9085000-0010						
	POTENTIOMER 10K Ω	1 TURN 9080000-0003		5 TURN 9085000-0001			10 TURN 9085000-0002						

D	25	9650444-0038	SSCR,CRES,0.112-40X.12 SKT HD	2
	24	9650444-0214	SSCR .164-32X3/16,SKT HD,316SS	2
	23	9000312-0071	SEAL,O'RING,NITRILE,0.145 ID	2
	22	9007121-9304	8-32 X 3/16 PH PAN HEAD SS	2
	21	9678463-0000	LABEL,SET SCREW ACCESS,PT1A	1
	20	9650444-0093	CSCR ST STL,#8-32X2.25 SKT HD	2
	19	9650444-0121	MSCR CRES 0.112-40X0.75 XRSPNH	1
E	18	SEE TABLE 1	POTENTIOMETER	1
	17	9670021-0000	STANDOFF,ALUM,.252-.253 DIA	1
	16	9679947-0000	BRACKET,POT, MOLDED,PT101	1
	15	9030000-0010	PLUGS,COVER	4
	14	SEE TABLE 1	COVER	1
F	13	9011264-4404	SSCR 0.112-40X3/16,SKT HD,BLOX	2
	12	SEE TABLE 2	CABLE SUB-ASSEMBLY, Ø.019 SS	1
	11	9000400-0173	WASHER, SHIM,10 X 16 X 0.3, ST STL	1
	10	SEE TABLE 1	SPOOL,ALUM,PT101	1
	9	9678145-0000	GASKET,NEOPRENE,PT1A-SERIES	1
	8	9650444-0213	CSCR .164-32X5/8,SKT HD,316SS	2
	7	9650444-0119	MSCR CRES 0.112-40X.38 XRSPNH	2
G	6	9678599-0000	PLATE,POT,DELTRIN,PT1A-SERIES	1
	5	9603902-0000	SPRING SUB-ASSEMBLY	1
	4	9000410-0001	BEARING 3/8 X 7/8, PER DWG 650491	1
	3	9673531-0001	MOUNTING PLATE, SPRING SIDE	1
	2	SEE TABLE 1	CBLGUIDE,NYLON RFL,PT101	1
	1	SEE TABLE 1	FRAME,PSNXDCR,BLACK,PT1	1
ITEM NO.	PART NUMBER	DESCRIPTION		QTY.



ENCODER INSTALLATION

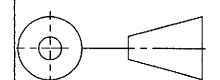
FLAT HEAD SCREWS (2)
P/N: 9650444-0231

USE LOCTITE PRIMER 7649,
ALLOW TO DRY, THEN USE
LOCTITE 222 (2 PLACES).

ORIGINAL

INFORMATION AND DATA SET FORTH HEREIN ARE DISCLOSED IN CONFIDENCE AND ARE PROPRIETARY TO AND THE PROPERTY OF CELESCO TRANSDUCER PRODUCTS INC. AND SHALL NOT BE USED, DUPLICATED, DISCLOSED OR TRANSFERRED, IN WHOLE OR IN PART, FOR ANY PURPOSE, WITHOUT THE EXPRESS PRIOR WRITTEN CONSENT OF CELESCO TRANSDUCER PRODUCTS INC.

THIRD ANGLE PROJECTION



celesco 20630 Plummer St
Chickasha, OK, 73011
Tel: (818) 701-2750 Fax: (818) 701-2799
www.celesco.com

TITLE
**ASSEMBLY DRAWING
PT1 SERIES**

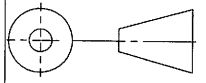

APPROVALS		DATE		SIZE	CODE IDENT. NO.	DWG. NO.	REV
DRAWN	E.GARCIA	7.8.2008		B	52158	PS-145	F
CHKD	<i>[Signature]</i>	5/25/11		SCALE: 1:2		SHEET 2 OF 10	
DO NOT SCALE DRAWING							

TABLE 2

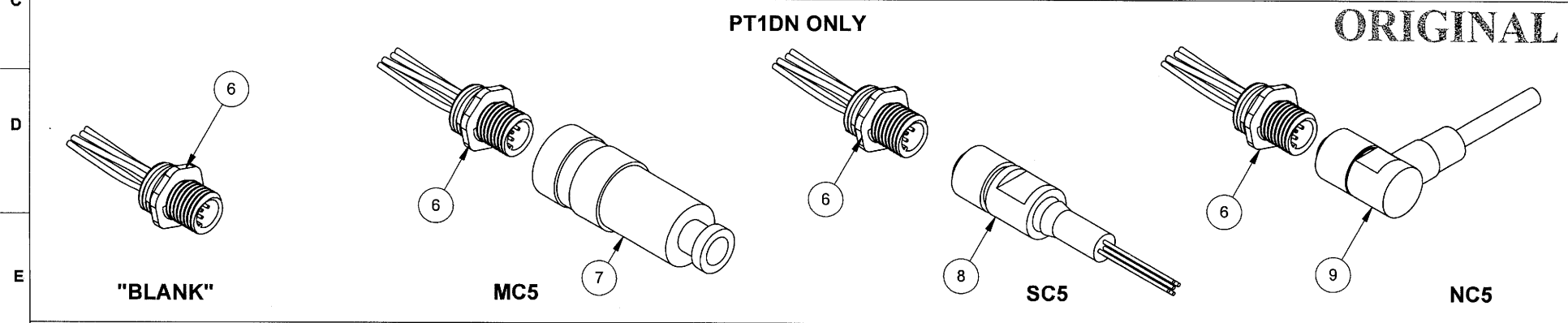
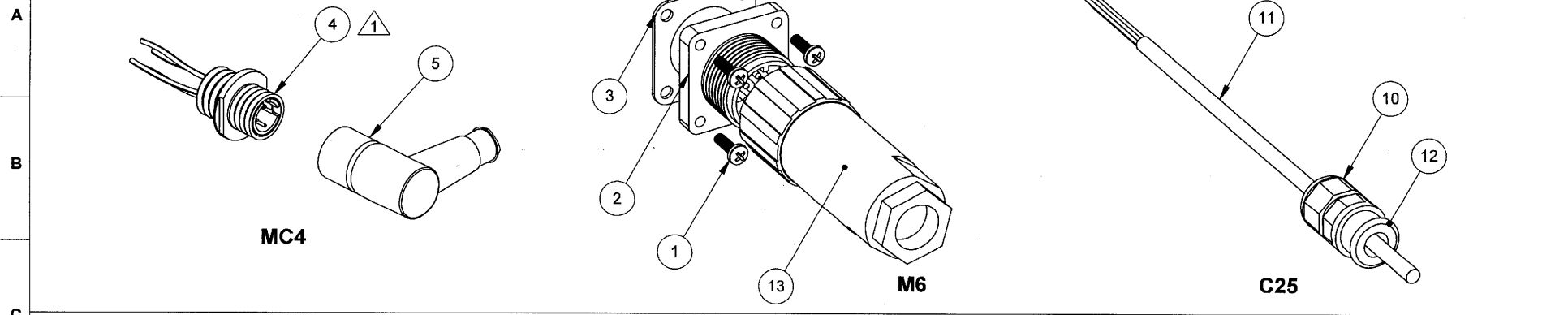
	PT1A	PT1AB ADJ 30mv/v	PT1MA 2-WIRE	PT1MA 3-WIRE	PT1DC (0-10VDC)	PT1DC (-10 TO +10VDC)	PT1DC (0-5VDC)	PT1DC (-5 TO +5 VDC)	PT1DN	PT1232
PCB	NONE	9603980-0013	9604224-0001	9604238-0001	9604246-0001	9604220-0001	9604104-0001	9604219-0001	9603945-0001	9604014-0001
CABLE KITS	9603861-XXXX (SEE NOTE 1)									
CABLE KITS PT1E SERIES	9604081-XXXX (SEE NOTE 1)									N / A
CABLE KITS (SPRING GUIDE)	9603918-XXXX (SEE NOTE 1)									N / A

1. DASH NUMBER OF CABLE SUB-ASSEMBLY EQUALS THE RANGE OF THE TRANSDUCER IN INCHES.

ORIGINAL

INFORMATION AND DATA SET FORTH HEREIN ARE DISCLOSED IN CONFIDENCE AND ARE PROPRIETARY TO AND THE PROPERTY OF CELESCO TRANSDUCER PRODUCTS INC. AND SHALL NOT BE USED, DUPLICATED, DISCLOSED OR TRANSFERRED, IN WHOLE OR IN PART, FOR ANY PURPOSE, WITHOUT THE EXPRESS PRIOR WRITTEN CONSENT OF CELESCO TRANSDUCER PRODUCTS INC.			
THIRD ANGLE PROJECTION			
		<small>22635 Plummer St Chatsworth, CA, 91311 Tel:(818)701-2750 Fax:(818)701-2789 www.celesco.com</small>	
TITLE ASSEMBLY DRAWING PT1 SERIES			
APPROVALS	DATE	SIZE	CODE IDENT. NO
DRAWN E.GARCIA	7.8.2009	B	52158
CHKD <i>[Signature]</i>		DWG. NO.	REV
		PS-145	F
DO NOT SCALE DRAWING		SCALE: 1:1	SHEET 3 OF 10

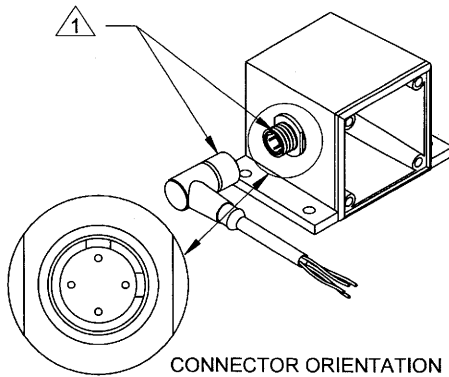
CONNECTOR ORDERING OPTIONS



PT1DN ONLY

ORIGINAL

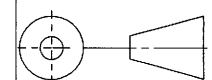
13	9036830-0001	CONN,PLUG,STR,14 SHELL,6 SKT	1
12	9000312-0131	SEAL,O'RING,NITRILE,0.426 ID	1
11	9000141-0026	CABLE,6COND,24GA,PER 650464	25ft
10	9032000-0042	BUSHING,STRAIN RELIEF,BLK,PT1A	1
9	9036810-0031	CONN,PLUG,5COND,90DEG,16FT, DN	1
8	9036810-0030	CONN,PLUG,5COND,STRGHT,16FT, DN	1
7	9036810-0032	CONN,STRAIGHT,FIELD ATTACHBLE, DN	1
6	9035701-0025	CONN,5 PIN,M12 MICRO,PANEL MNT	1
5	9036810-0025	CONN,PLUG,4COND,90°,12FT CBL	1
4	9035701-0012	CONN,RCPT,1/4NPT,4PIN,12"LEADS	1
3	9000320-0006	RUBBER GASKET, FLANGED CONN	1
2	9035830-0001	CONN,RCPT,BOX-MTG,14SHELL,6PIN	1
1	9650444-0119	MSCR CRES 0.112-40X.38 XRSPNHD	4
ITEM NO.	PART NUMBER	DESCRIPTION	QTY.



1 ALIGN CONNECTOR AS SHOWN, DIRECTING THE MATING CONNECTOR AS SHOWN

INFORMATION AND DATA SET FORTH HEREIN ARE DISCLOSED IN CONFIDENCE AND ARE PROPRIETARY TO AND THE PROPERTY OF CELESCO TRANSDUCER PRODUCTS INC. AND SHALL NOT BE USED, DUPLICATED, DISCLOSED OR TRANSFERRED, IN WHOLE OR IN PART, FOR ANY PURPOSE, WITHOUT THE EXPRESS PRIOR WRITTEN CONSENT OF CELESCO TRANSDUCER PRODUCTS INC.

THIRD ANGLE PROJECTION



celesco 28630 Plummer St
Chattahoochee, GA, 31511
Transducer Products Inc. www.celesco.com
Tel: (818) 701-2750 Fax: (818) 701-2799

**ASSEMBLY DRAWING
PT1 SERIES**

APPROVALS		DATE		SIZE	CODE IDENT. NO	DWG. NO.	REV
DRAWN E.GARCIA		7.8.2008		B	52158	PS-145	F
CHKD J. STAS/11				DO NOT SCALE DRAWING		SCALE: 1:1	SHEET 4 OF 10

PT1A			
	POTENTIOMETER		
	CCW (1)	CW (3)	S (2)
MC4 CONNECTOR	RED-BLK TR.	RED-WHT TR.	RED
M6 CONNECTOR	PIN A	PIN B	PIN C
C25 INSTRUMENTATION CABLE	RED	BLACK	GREEN

PT1232					
	6-PIN HARNESS 604017		4-PIN HARNESS 604141		
	RED	BLACK	WHITE	BLACK	GREEN
M6 CONNECTOR	PIN A	PIN B	PIN D	PIN E	PIN F
INSTRUMENTATION CABLE	RED	BLACK	GREEN	BLUE	BROWN
	3-PIN HARNESS 604019				
	WHITE	GREEN	BLACK		
POTENTIOMETER	CCW (1)	S (2)	CW (3)		

PT1MA (2-WIRE 4-20mA)			
	4-PIN HARNESS 604066		
	WHITE	BLACK	GREEN
MC4 CONNECTOR	RED-BLK TR.	RED-WHT TR.	-
M6 CONNECTOR	PIN A	PIN B	-
C25 INSTRUMENTATION CABLE	RED	BLACK	-

	3-PIN HARNESS 604019		
	WHITE	GREEN	BLACK
POTENTIOMETER	CCW (1)	S (2)	CW (3)

PT1DC			
	4-PIN HARNESS 604066		
	WHITE	GREEN	BLACK
MC4 CONNECTOR	RED-BLK TR.	RED-WHT R.	RED
M6 CONNECTOR	PIN A	PIN B	PIN C
C25 INSTRUMENTATION CABLE	RED	GREEN	BLACK

	3-PIN HARNESS 604019		
	WHITE	GREEN	BLACK
POTENTIOMETER	CCW (1)	S (2)	CW (3)

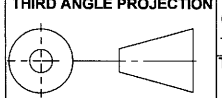
PT1MA (3-WIRE 0-20mA)			
	4-PIN HARNESS 604066		
	WHITE	BLACK	GREEN
MC4 CONNECTOR	RED-BLK TR.	RED-WHT R.	RED
M6 CONNECTOR	PIN A	PIN B	PIN C
C25 INSTRUMENTATION CABLE	RED	BLACK	GREEN
	3-PIN HARNESS 604019		
	WHITE	GREEN	BLACK
POTENTIOMETER	CCW (1)	S (2)	CW (3)

PT1DN			
	3-PIN HARNESS 604019		
	WHITE	GREEN	BLACK
POTENTIOMETER	CCW (1)	S (2)	CW (3)

PT1E				
	COMS/TTL AND OPEN COLLECTOR	5V LINE DRIVER AND UNIVERSAL LINE DRIVER		
	9650648-0100			
	9650648-1000			
	9650648-2000			
	9650648-2500			
	9650650-0100	9650649-0100		
	9650650-1000	9650649-1000		
	9650650-2000	9650649-2000		
	9650650-2500	9650649-2500		
6 PIN CONNECTOR	PIN A PIN B PIN C PIN D PIN E PIN F	RED BLACK WHITE GREEN — —	RED BLACK WHITE GREEN BLUE GRAY	INPUT COMMON CHANNEL B CHANNEL A CHANNEL B' CHANNEL A'
4 PIN CONNECTOR	PIN 1 PIN 2 PIN 3 PIN 4	RED WHITE GREEN BLACK	— — — —	INPUT CHANNEL B CHANNEL A COMMON
INSTRUMENTATION CABLE	RED BLACK WHITE GREEN BLK/WHT BLK/GRN	RED BLACK WHITE GREEN — —	RED BLACK WHITE GREEN GRAY BLUE	INPUT COMMON CHANNEL B CHANNEL A CHANNEL B' CHANNEL A'

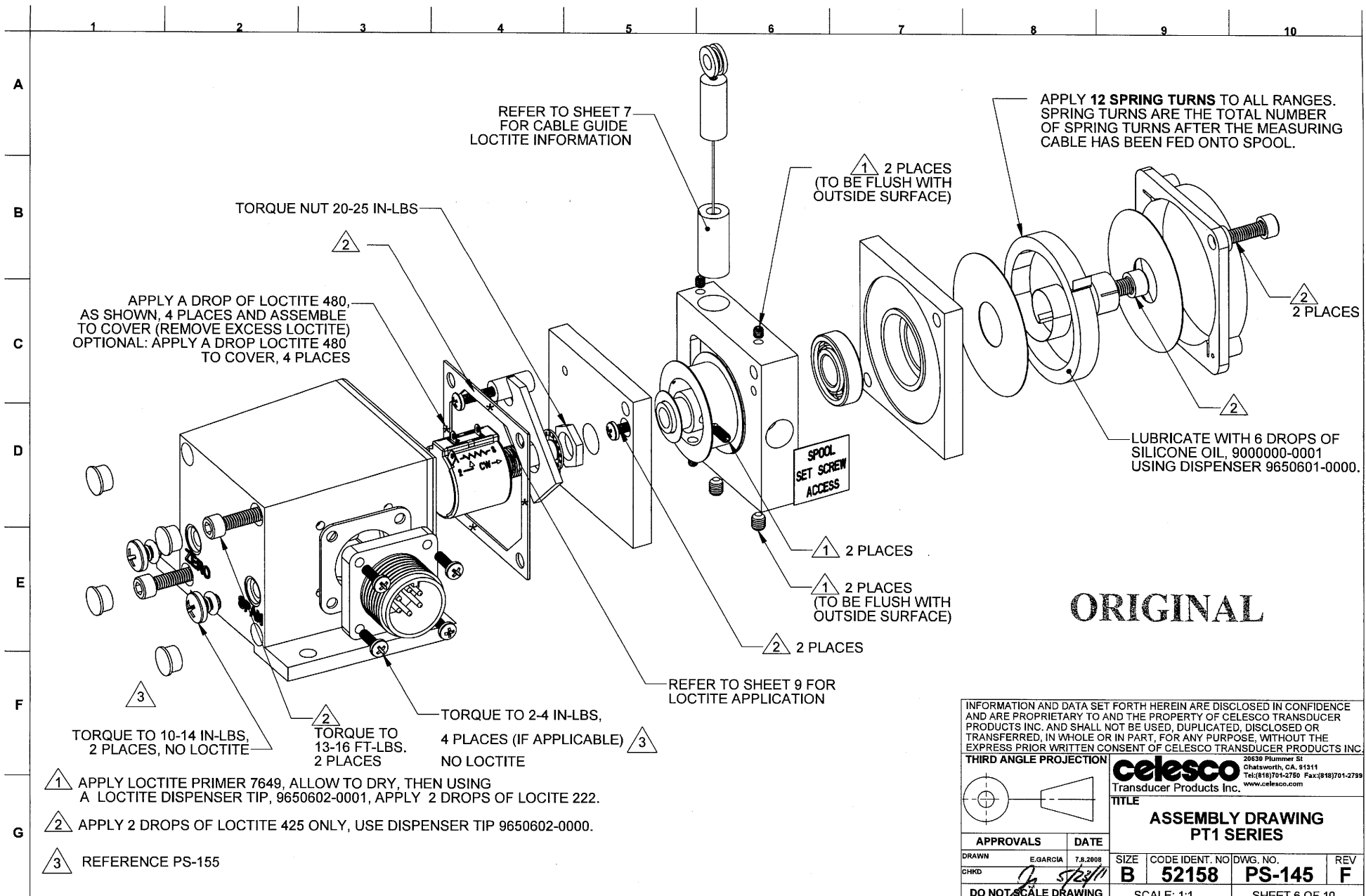
ORIGINAL

INFORMATION AND DATA SET FORTH HEREIN ARE DISCLOSED IN CONFIDENCE AND ARE PROPRIETARY TO AND THE PROPERTY OF CELESCO TRANSDUCER PRODUCTS INC. AND SHALL NOT BE USED, DUPLICATED, DISCLOSED OR TRANSFERRED, IN WHOLE OR IN PART, FOR ANY PURPOSE, WITHOUT THE EXPRESS PRIOR WRITTEN CONSENT OF CELESCO TRANSDUCER PRODUCTS INC.



celesco 26530 Plummer St
Chatsworth, GA, 31311
Tel: (818) 701-2750 Fax: (818) 701-2795
www.celesco.com

THIRD ANGLE PROJECTION		APPROVALS		DATE	
DRAWN	E. GARCIA			7.8.2008	
CHKD	<i>[Signature]</i>	SIZE	CODE IDENT. NO.	DWG. NO.	REV
DO NOT SCALE DRAWING		B	52158	PS-145	F
SCALE: 1:1			SHEET 5 OF 10		



ORIGINAL

INFORMATION AND DATA SET FORTH HEREIN ARE DISCLOSED IN CONFIDENCE AND ARE PROPRIETARY TO AND THE PROPERTY OF CELESCO TRANSDUCER PRODUCTS INC. AND SHALL NOT BE USED, DUPLICATED, DISCLOSED OR TRANSFERRED, IN WHOLE OR IN PART, FOR ANY PURPOSE, WITHOUT THE EXPRESS PRIOR WRITTEN CONSENT OF CELESCO TRANSDUCER PRODUCTS INC.

THIRD ANGLE PROJECTION

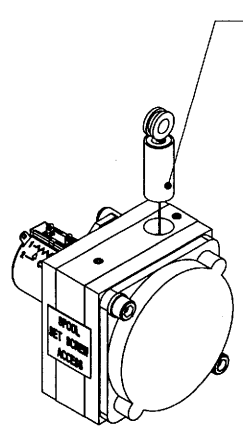
celesco
20530 Plummer St
Chatsworth, GA, 31311
Tel: (818) 701-2750 Fax: (818) 701-2799
www.celesco.com

ASSEMBLY DRAWING
PT1 SERIES

APPROVALS		DATE	
DRAWN	E. GARCIA	7.8.2008	
CHKD	<i>[Signature]</i>	SIZE	CODE IDENT. NO. DWG. NO.
DO NOT SCALE DRAWING		B	52158 PS-145
		SCALE: 1:1	SHEET 6 OF 10

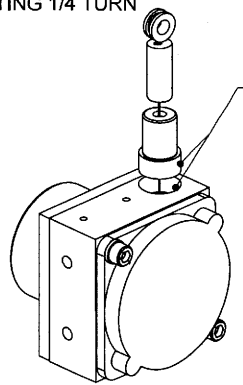
1 2 3 4 5 6 7 8 9 10

A
B
C
D
E
F
G

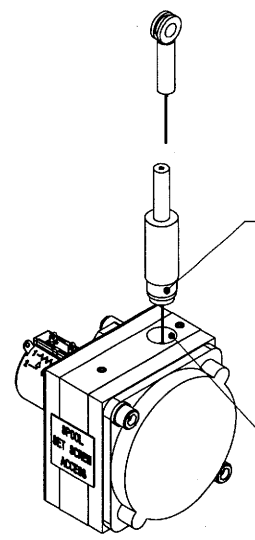


PT1-STANDARD CABLE GUIDE

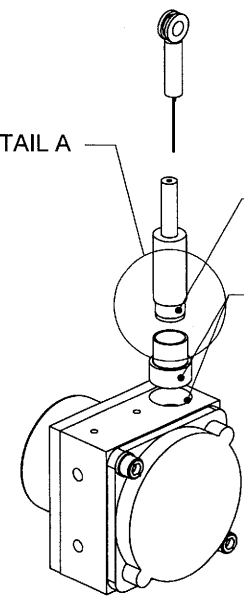
APPLY A BEAD OF LOCTITE 401 ⁴
ALL AROUND GUIDE. INSERT INTO
FRAME TWISTING 1/4 TURN



PT1E-STANDARD CABLE GUIDE

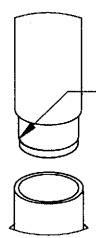


PT1-SPRING LOADED GUIDE



PT1E-SPRING LOADED GUIDE

SEE DETAIL A

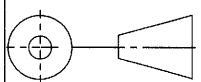
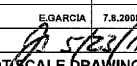


DO NOT USE BASE
(DISCARD)

DETAIL SEE DETAIL A
SCALE 4 : 3

ORIGINAL

- ¹ USE SANDPAPER (150-220 GRIT) TO ROUGHEN DELRIN AND ALUM SURFACES SHOWN.
- ² CLEAN SURFACES USING ALCOHOL ON COTTON SWAB. APPLY LOCTITE PRIMER 770 TO BOTH PARTS, ALLOW TO DRY.
- ³ APPLY 2-3 DROPS OF LOCTITE 480 TO THE CABLE GUIDE AND FRAME IN AREAS SHOWN. TWIST PARTS 1/4 TURN WHILE ASSEMBLING. HOLD PARTS TOGETHER FOR 2 MINUTES **MINIMUM**.
- ⁴ SPECIFIC DISPENSING NOZZLE NOT REQUIRED.

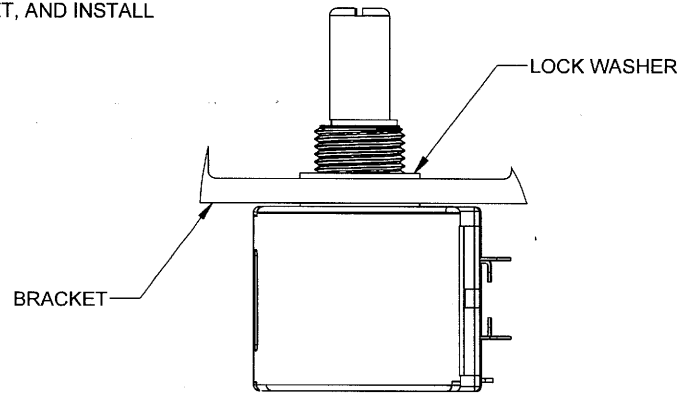
INFORMATION AND DATA SET FORTH HEREIN ARE DISCLOSED IN CONFIDENCE AND ARE PROPRIETARY TO AND THE PROPERTY OF CELESCO TRANSDUCER PRODUCTS INC. AND SHALL NOT BE USED, DUPLICATED, DISCLOSED OR TRANSFERRED, IN WHOLE OR IN PART, FOR ANY PURPOSE, WITHOUT THE EXPRESS PRIOR WRITTEN CONSENT OF CELESCO TRANSDUCER PRODUCTS INC.				
THIRD ANGLE PROJECTION 		celesco Transducer Products Inc. 20630 Plummer St Chatsworth, CA, 91311 Tel: (818) 701-2750 Fax: (818) 701-2795 www.celesco.com		
TITLE ASSEMBLY DRAWING PT1 SERIES				
APPROVALS		DATE		
DRAWN E. GARCIA	7.8.2009	SIZE B	CODE IDENT. NO 52158	DWG. NO. PS-145
CHKD 		REV F		
DO NOT SCALE DRAWING		SCALE: 2:3		SHEET 7 OF 10

1 2 3 4 5 6 7 8 9 10

A

1. INSERT POT THROUGH HOLE IN BRACKET, AND INSTALL WASHER AGAINST BRACKET.

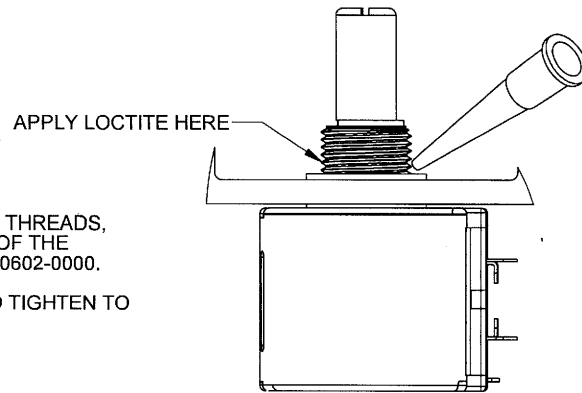
B



C

D

E



F

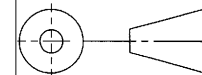
2. APPLY 1 DROP OF LOCTITE 425 TO THE THREADS, APPROX 1-2 THREADS FROM THE TOP OF THE LOCKWASHER. USE DISPENSER TIP9650602-0000.
3. ATTACH NUT TO THREADS OF POT AND TIGHTEN TO 20-25 IN-LBS OF TORQUE.

G

ORIGINAL

INFORMATION AND DATA SET FORTH HEREIN ARE DISCLOSED IN CONFIDENCE AND ARE PROPRIETARY TO AND THE PROPERTY OF CELESCO TRANSDUCER PRODUCTS INC. AND SHALL NOT BE USED, DUPLICATED, DISCLOSED OR TRANSFERRED, IN WHOLE OR IN PART, FOR ANY PURPOSE, WITHOUT THE EXPRESS PRIOR WRITTEN CONSENT OF CELESCO TRANSDUCER PRODUCTS INC.

THIRD ANGLE PROJECTION



celesco 20630 Plummer St
Chatsworth, CA, 91311
Tel: (818)701-2750 Fax: (818)701-2799
www.celesco.com

Transducer Products Inc.

TITLE
**ASSEMBLY DRAWING
PT1 SERIES**

APPROVALS DATE

DRAWN	E.GARCIA	7.8.2008
-------	----------	----------

CHKD	<i>JG</i>	5/22/11
------	-----------	---------

DO NOT SCALE DRAWING

SIZE	CODE IDENT. NO	DWG. NO.	REV
------	----------------	----------	-----

B	52158	PS-145	F
----------	--------------	---------------	----------

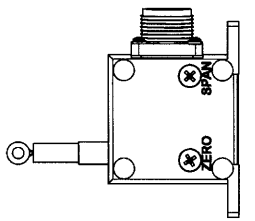
SCALE: 2:1	SHEET 8 OF 10
------------	---------------

TABLE 3 ACCEPTANCE TEST CRITERIA PT1A SERIES USE CALIBRATION FIXTURE P/N: 680360 WHEN COMPRESSIBLE GUIDE IS USED		
CABLE POSITION % F.S.	ACCEPTABLE OUTPUT	
	PT1A-POTENTIOMETER	PT1A-BRIDGE CIRCUIT
0%	0.05 - 0.15 VDC	-42.00 mV - -38.00 mV
50%	N/A	-0.30 mV - 0.30 mV
100%	9.00 - 9.80 VDC	38.00 mV - 42.00 mV

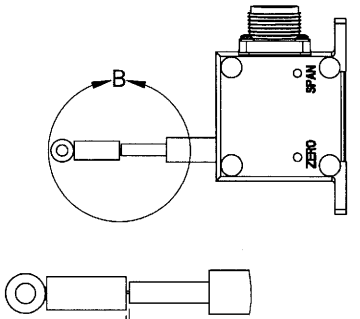
TABLE 4 ACCEPTANCE TEST CRITERIA PT1MA USE CALIBRATION FIXTURE P/N: 680360 WHEN COMPRESSIBLE CABLE GUIDE IS USED				
CABLE POSITION %F.S.	ACCEPTABLE OUTPUT			
	PT1MA-420E	PT1MA-420R	PT1MA-020E	PT1MA-020R
0%	3.980 - 4.020 mA	19.980 - 20.020 mA	0.000 - 0.050 mA	19.975 - 20.025 mA
100%	3.980 - 4.020 mA	19.980 - 20.020 mA	19.975 - 20.025 mA	0.000 - 0.050 mA

TABLE 5 ACCEPTANCE TEST CRITERIA PT1DC USE CALIBRATION FIXTURE 680360 WHEN COMPRESSIBLE CABLE GUIDE IS USED								
CABLE POSITION %F.S.	ACCEPTABLE OUTPUT							
	PT1DC-Z10	PT1DC-10Z	PT1DC-Z5	PT1DC-5Z	PT1DC-M0P0	PT1DC-P0M0	PT1DC-M5P5	PT1DC-P5M5
0%	-0.015 - 0.015 VDC	9.985 - 10.015 VDC	-0.015 - 0.015 VDC	4.985 - 5.015 VDC	-10.015 - -9.985 VDC	9.985 - 10.015 VDC	-5.015 - -4.985 VDC	4.985 - 5.015 VDC
100%	9.985 - 10.015 VDC	-0.015 - 0.015 VDC	4.985 - 5.015 VDC	-0.015 - 0.015 VDC	9.985 - 10.015 VDC	-10.015 - -9.985 VDC	4.985 - 5.015 VDC	-5.015 - -4.985 VDC

ADJUSTMENT FOR ALL RANGES
USING STANDARD CABLE GUIDE
- MAKE ADJUSTMENTS
(POTENTIOMETER, ZERO AND SPAN)
WITH MEASURING CABLE FULLY
RETRACTED, AS SHOWN



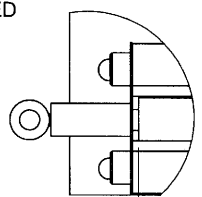
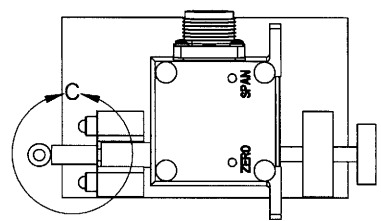
ADJUSTMENT FOR 2 IN AND 5 IN
USING COMPRESSIBLE CABLE GUIDE
MAKE ADJUSTMENTS
(POTENTIOMETER, ZERO AND SPAN)
WITH COMPRESSIBLE CABLE GUIDE
IN A FREE STATE, AS SHOWN.



CALIBRATION BEGINS
WITH CABLE .02 - .03 INCHES
AWAY FROM THE CABLE
GUIDE. FOLLOW CALIBRATION
PARAMETERS IN TABLES ABOVE.

DETAIL - B

ADJUSTMENT FOR 10, 15, 20, 30, 40 AND 50 IN
USING COMPRESSIBLE CABLE GUIDE
- MAKE ADJUSTMENTS (POT, ZERO AND SPAN) WITH
COMPRESSIBLE CABLE GUIDE FULLY COMPRESSED
USING FIXTURE P/N: 680360, AS SHOWN.



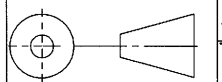
DETAIL - C

ORIGINAL

CALIBRATION BEGINS WITH
CABLE .02 - .03 INCHES
AWAY FROM THE CABLE
GUIDE (COMPRESSED). FOLLOW
CALIBRATION PARAMETERS
IN TABLES ABOVE.

INFORMATION AND DATA SET FORTH HEREIN ARE DISCLOSED IN CONFIDENCE
AND ARE PROPRIETARY TO AND THE PROPERTY OF CELESCO TRANSDUCER
PRODUCTS INC. AND SHALL NOT BE USED, DUPLICATED, DISCLOSED OR
TRANSFERRED, IN WHOLE OR IN PART, FOR ANY PURPOSE, WITHOUT THE
EXPRESS PRIOR WRITTEN CONSENT OF CELESCO TRANSDUCER PRODUCTS INC.

THIRD ANGLE PROJECTION



celesco
20630 Plummer St
Chatsworth, CA 91311
Tel: (818) 701-2750 Fax: (818) 701-2799
www.celesco.com

Transducer Products Inc.
TITLE
**ASSEMBLY DRAWING
PT1 SERIES**

APPROVALS		DATE	SIZE	CODE IDENT. NO	DWG. NO.	REV
DRAWN	E.GARCIA	7.8.2008	B	52158	PS-145	F
CHKD	<i>[Signature]</i>					
DO NOT SCALE DRAWING			SCALE: 2:1		SHEET 9 OF 10	

