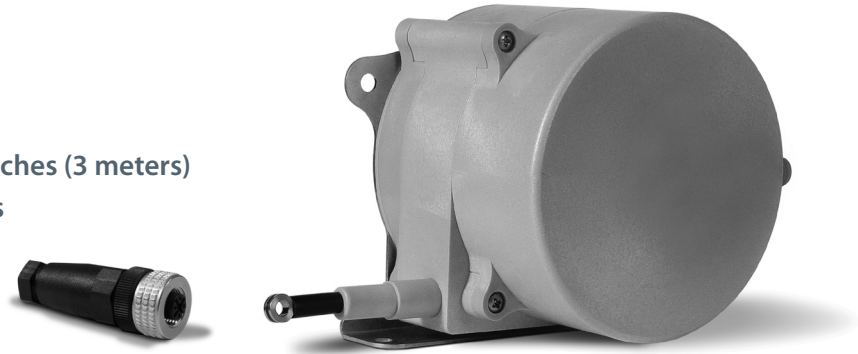


SR1V

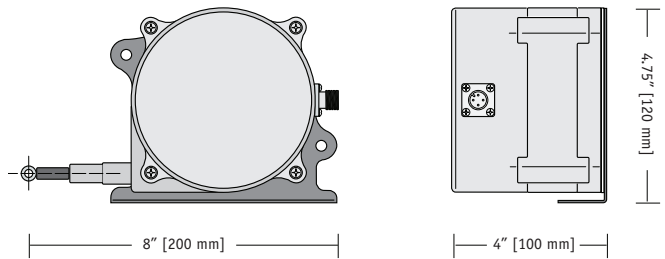
Industrial Low Cost String Pot

User Scalable VDC Output Signal
 Linear Position Measurement up to 125 inches (3 meters)
 Designed for Outdoor / Wet environments



COMPLETE SPECIFICATIONS

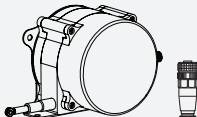
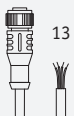
Maximum Full Stroke Range	125 inches (3175 mm)
Output Signal Settings	0-5, 0-10, -5-+5, -10-+10 VDC
Accuracy, full stroke range \geq 10 inches (254 mm)	.5% FS.
Accuracy, full stroke range $<$ 10 inches (254 mm)	consult factory
Environmental Suitability	NEMA 6, IP67
Operating Temperature	-40° to 185° F (-40° to 85° C)
Input Voltage	15-30 VDC (10-30 VDC for 0-5, -5-+5 volt signal)
Input Current	50 mA, max.
Maximum Output Load	20 mA
Repeatability	.1% FS.
Resolution	.003% FS.
Output Signal Update Rate	1 msec
Maximum Velocity	80 inches (2 meters) per second
Maximum Acceleration	10 G (retraction)
Sensor	plastic-hybrid precision potentiometer
Cycle Life	250,000 (potentiometer)
Enclosure	polycarbonate
Measuring Cable	.034-inch dia. nylon-coated stainless
Electrical Connection	M12 Connector (mating plug included)
Weight	2.5 lbs. (1.3 Kg)



SR1V is a rugged, low-cost, high performance string pot built for wet environments and outdoor applications. Originally designed for off-road construction equipment, the SR1V is the perfect low-cost solution for OEM and stocking distributors.

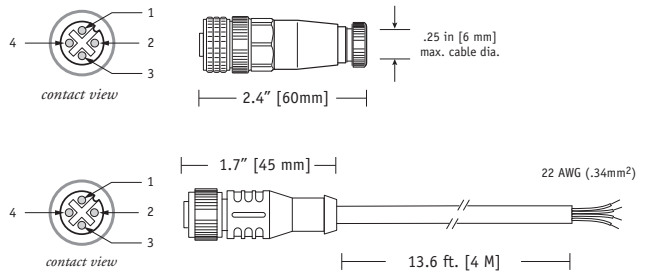
What sets this sensor apart from other string pots, is the internal programmable digital circuitry that gives the customer a one-size-fits-all approach for many applications. The SR1V ships factory calibrated to the full 125-inch (3-meter) measurement range but the output signal can be easily re-scaled to match any stroke down to 1 inch (25 mm)!

Ordering Information

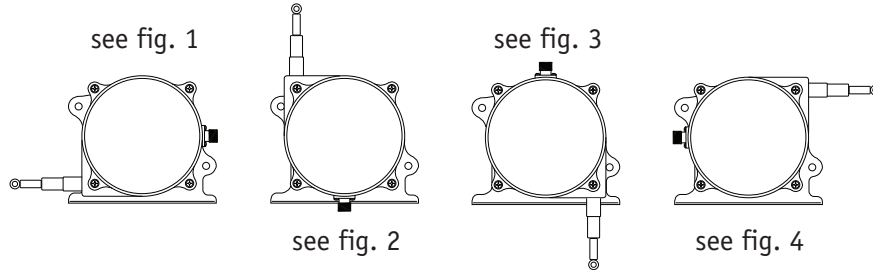
part number	description	
 SR1V-125	SR1V String Pot Factory Calibrated to 125" includes 4-pin M12 connector	
 9036810-0040	13 ft (4 m) Optional Cordset w/ 4-pin M12 connector	

Electrical Connection

output signal	connector pin	colorcode (cordset)
15...30 vdc	1	brown
output signal	2	white
common	3	blue
n/c	4	black



Measuring Cable Exit Direction Options



Changing the Measuring Cable Exit and Electrical Connector Direction

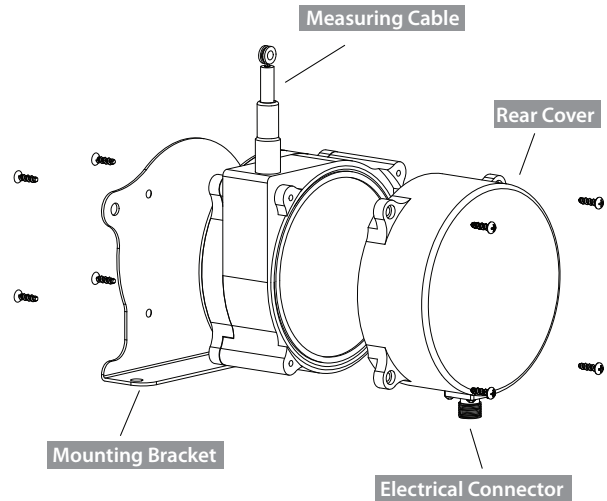
Changing Measuring Cable Exit

To change the direction of the measuring cable, remove the 4 mounting bracket screws and rotate bracket to one of four available positions. See figures 1 - 4 on the following pages for mounting dimensions.

Changing Electrical Connector Direction

To change the position of the electrical connector, remove the 4 rear cover screws and carefully separate rear cover from the sensor body.

Rotate the rear cover to desired position being careful to not tangle the wiring harness that runs to the connector.

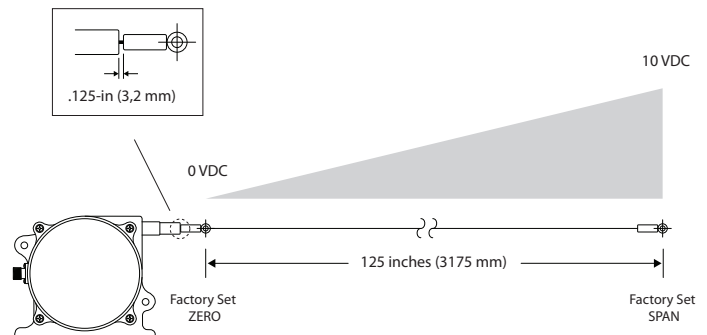


Factory Calibrated Stroke Range

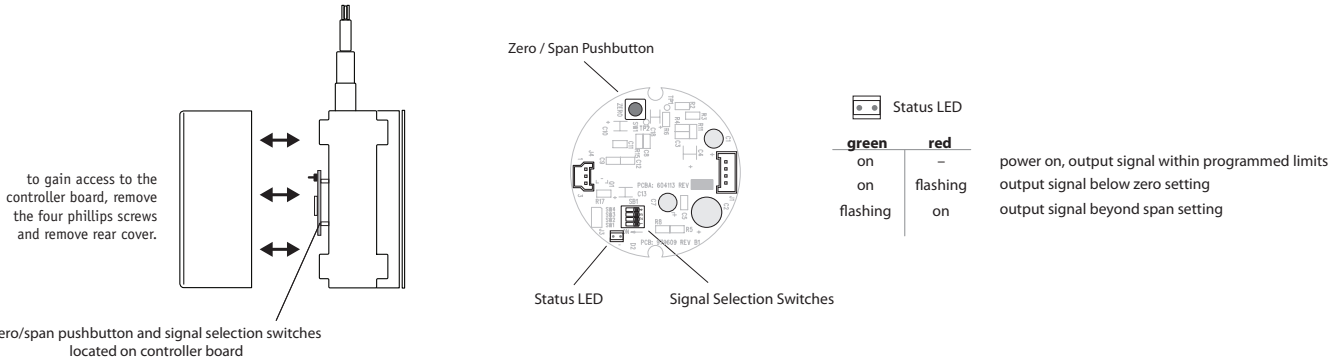
The full scale output signal is set at the factory to the maximum full stroke range of 125 inches. The ZERO point (output = 0 Vdc) is set at the beginning* of the stroke range (0 inches) and the SPAN point (output = 10 Vdc) is set to the end of the range (125 inches).

**Important* — The ZERO point is set at the factory with the measuring cable pulled out .125 inches from full retraction.

This is for the factory setting only and the ZERO may be reprogrammed at full retraction at any time.



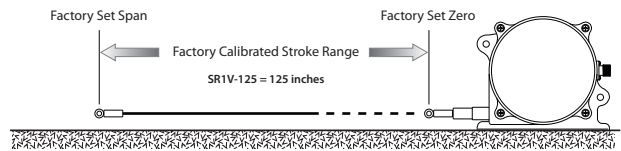
Internal Controller Board



Changing Output Signal

Reprogramming ZERO and SPAN:

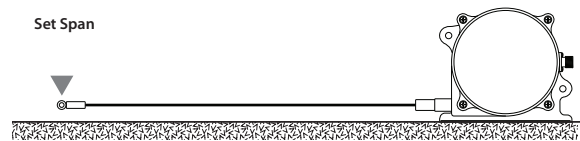
Though ZERO and SPAN points have been preset at the factory, they can easily be changed to match any desired stroke (25-in. minimum) within the full stroke limits of the sensor. To reprogram the SR1V to your own settings, remove the rear cover to gain access to the internal controller board. Locate the push-button on the circuit board and follow the instructions below.



Please note that ZERO and SPAN points can be set independently. You can set one without setting the other. This operation must be performed with the sensor under power. *Important: when you are finished, disconnect power for a couple of seconds to permanently set your new settings.*

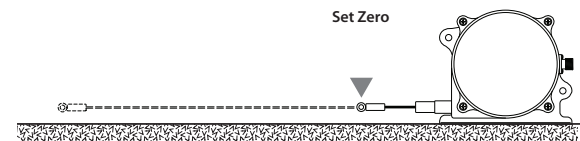
Setting Span:

Set the cable to the desired SPAN limit then depress and hold the button until the STATUS LED begins to flash RED. Release the button (when the LED is flashing RED, not GREEN) and the flashing will slow down to about two-second intervals which indicates the SPAN value is being set into memory. When completed, the STATUS LED will display solid GREEN.



Setting Zero:

Set the cable to the desired ZERO limit and then depress and hold the button until the STATUS LED begins to flash GREEN. Release the button (when the LED is flashing GREEN, not RED) and the flashing will slow down to about two-second intervals which indicates the ZERO value is being set into memory. When completed, the STATUS LED will display solid GREEN. Remove power for 2 seconds then reconnect.



Changing the Output Signal:

		switch settings				
		SW1	SW2	SW3	SW4	
output signal options (VDC)	zero	span	off	off	off	off
	0 ... 5		on	off	off	off
	5 ... 0		off	off	off	on
	0 ... 10		on	off	off	on
	10 ... 0		off	off	on	off
	-5 ... +5		on	off	on	off
	+5 ... -5		off	on	off	off
	-10 ... +10		on	on	off	off
+10 ... -10		off	off	on	off	

The SR1V leaves the factory set with a 0...10 VDC full scale output signal. The signal can be reversed or changed to either 0...5, -5...+5 or -10...+10 VDC (see illustration) by simply changing a dipswitch located on the controller board.

If you wish to simply reverse the output signal or change it to a different voltage range, you may do so without resetting the "zero" and "span" points.

Remove the rear cover to gain access to the board.

Outline Drawings

Fig. 1 - "Front" Cable Exit Direction (as shipped)

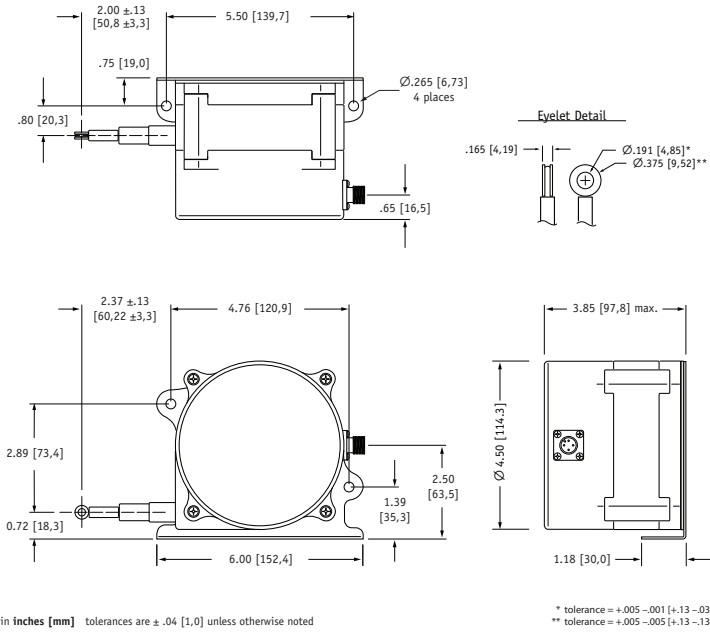


Fig. 2 - "Up" Cable Exit Direction

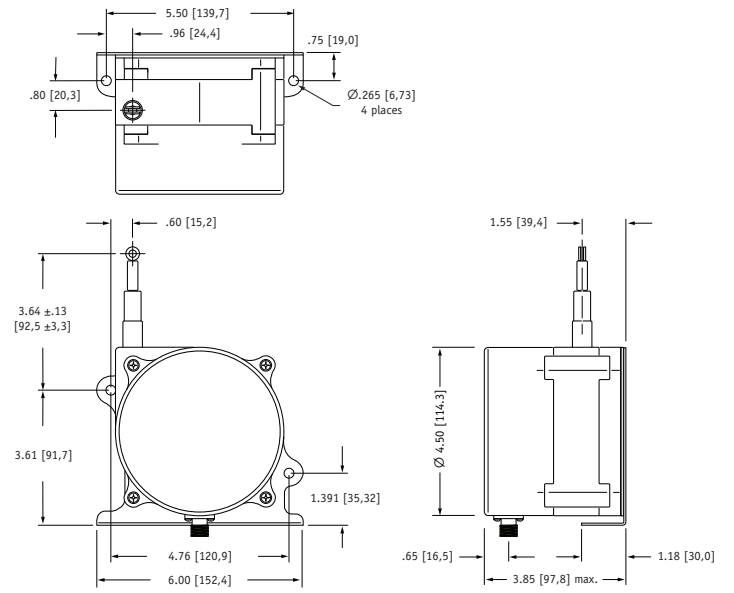


Fig. 3 - "Down" Cable Exit Direction

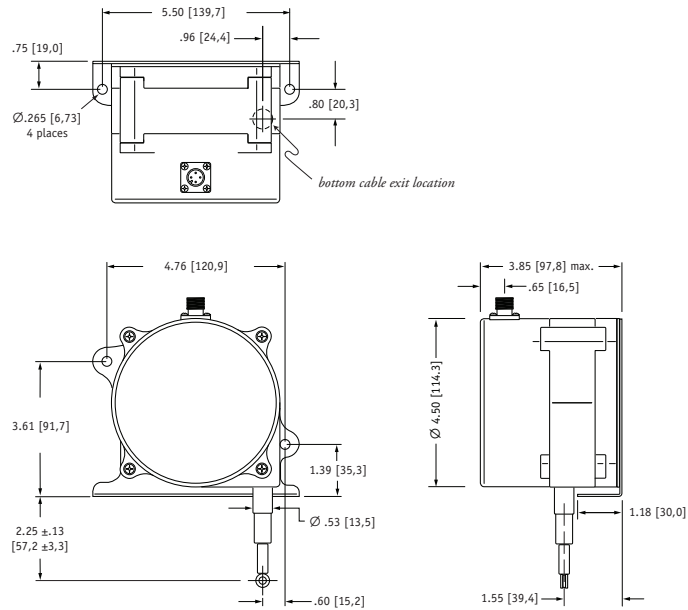


Fig. 4 - "Rear" Cable Exit Direction

