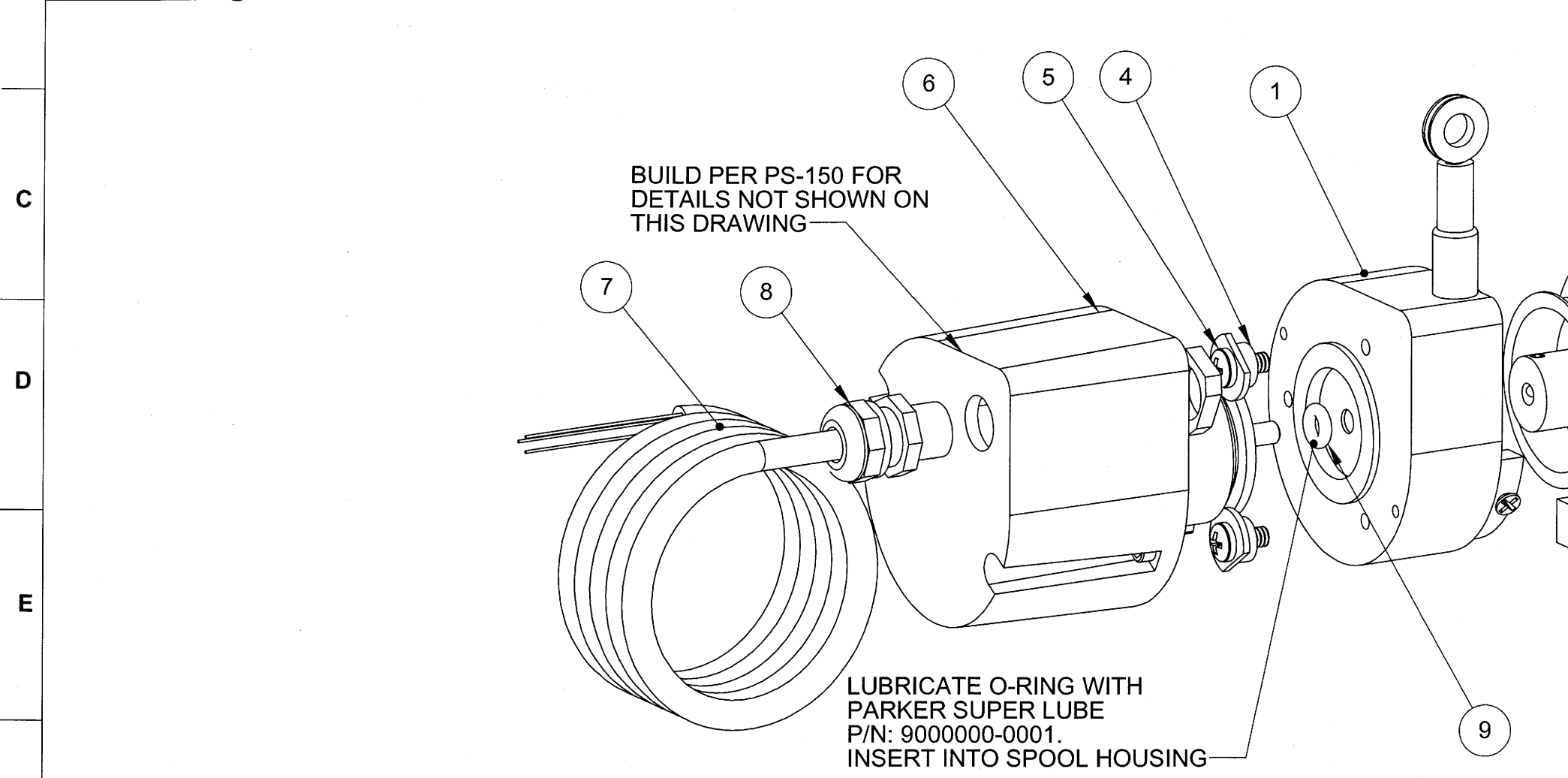


TABLE 1							
ORDER CODE -->	C1	C4	C2	C5	C3	C6	BC (NO HOLES)
POLYCARBONATE COVER (6)	9678818-0001		9678818-0002		9678818-0003		9678686-0000
ORDER CODE -->	C1A	C4A	C2A	C5A	C3A	C6A	BCA (NO HOLES)
ALUMINUM COVER (6)	9679812-0001		9679812-0002		9679812-0003		9679899-0000
ELECTRICAL CABLE LENGTH (7)	15 FEET	30 FEET	15 FEET	30 FEET	15 FEET	30 FEET	-----

REVISIONS			
REV.	DESCRIPTION	DATE	APPROVED
B	SEE DCN: 7120	8/24/2009	<i>MSK</i>

ORIGINAL



ITEM NO.	PART NUMBER	DESCRIPTION	QTY.
9	9000313-0061	SEAL, O'RING, NITRILE, 0.114 ID	1
8	9679781-0000	BUSHING, STRAIN RELIEF, NICKEL	1
7	9000141-0030	CABLE, 3COND, 24 GA, PER 650478	AR
6	SEE TABLE 1	COVER, POT, MOD, MT3A	1
5	9007121-4405	MSCR CRES 0.112-40X0.25 XRSPNH	3
4	9000400-0226	CLAMP, SERVO MTG, SEE DWG 679439	3
3	9679381-0000	SPOOL, ALUM, MT3A	1
2	9678683-0000	SPRING, POWER, MT2A	1
1	9679380-0000	HOUSING, SPOOL, ALUM, MT3A	1

INFORMATION AND DATA SET FORTH HEREIN ARE DISCLOSED IN CONFIDENCE AND ARE PROPRIETARY TO AND THE PROPERTY OF CELESCO TRANSDUCER PRODUCTS INC. AND SHALL NOT BE USED, DUPLICATED, DISCLOSED OR TRANSFERRED, IN WHOLE OR IN PART, FOR ANY PURPOSE, WITHOUT THE EXPRESS PRIOR WRITTEN CONSENT OF CELESCO TRANSDUCER PRODUCTS INC.

THIRD ANGLE PROJECTION

celesco
Transducer Products Inc.
20630 Plummer St
Chatsworth, CA. 91311
Tel: (818) 701-2750 Fax: (818) 701-2799
www.celesco.com

TITLE
MT3A ASSEMBLY

APPROVALS	DATE	SIZE	CODE IDENT. NO	DWG. NO.	REV
DRAWN E.GARCIA	1/16/2009	B	52158	PS-158	B
CHKD <i>[Signature]</i>		DO NOT SCALE DRAWING		SCALE: 5:4	SHEET 1 OF 3

ACCEPTANCE TEST PROCEDURE - EXCEPT 30"

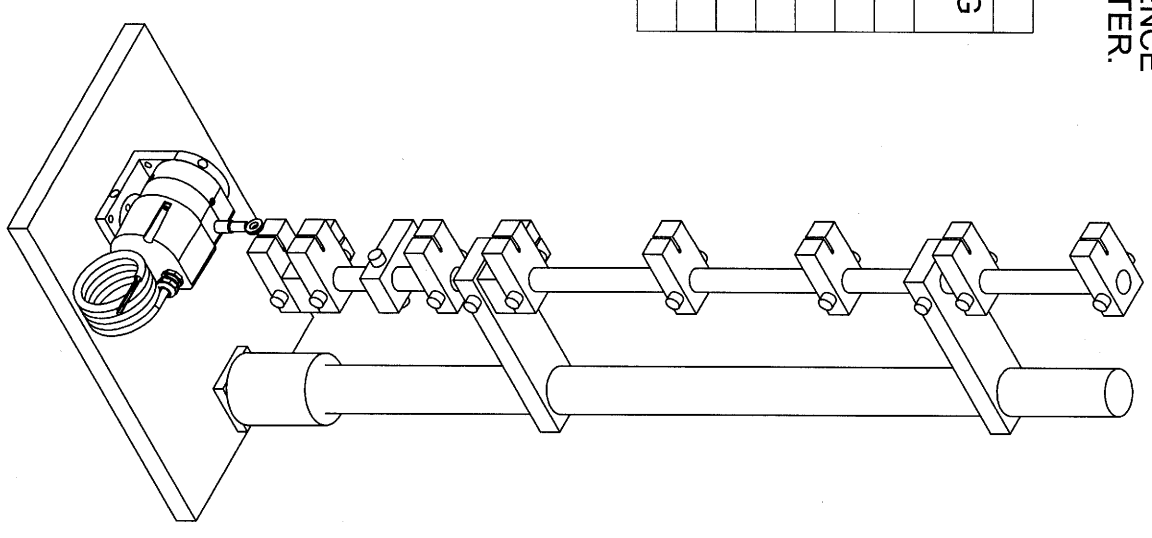
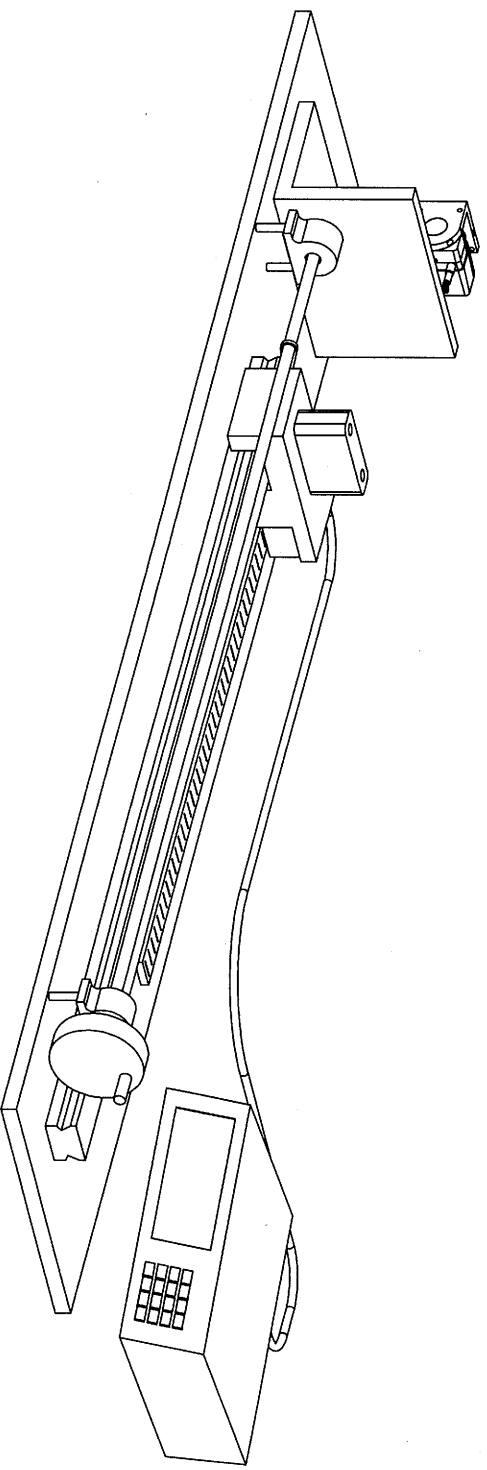
1. USING THE TEST FIXTURE C13034 AND THE HARNESS LABELED MT2A, ENTER THE DATA PER THE SEQUENCE NUMBER IN TABLE 2 INTO THE TEST DATA COMPUTER.

CABLE POSITION % F.S.	OUTPUT DURING EXTENSION	OUTPUT DURING RETRACTION
0%	#1	#22
10%	#2	#21
20%	#3	#20
30%	#4	#19
40%	#5	#18
50%	#6	#17
60%	#7	#16
70%	#8	#15
80%	#9	#14
90%	#10	#13
100%	#11	#12

ACCEPTANCE TEST PROCEDURE - 30" ONLY

1. USING THE TEST FIXTURE 680293 AND THE HARNESS LABELED MT2A, ENTER THE DATA PER THE SEQUENCE NUMBER IN TABLE 3 INTO THE TEST DATA COMPUTER.

CABLE POSITION	OUTPUT DURING EXTENSION	OUTPUT DURING RETRACTION
0.000	#1	#14
5.000	#2	#13
10.000	#3	#12
15.000	#4	#11
20.000	#5	#10
25.000	#6	#9
30.000	#7	#8



INFORMATION AND DATA SET FORTH HEREIN ARE DISCLOSED IN CONFIDENCE AND ARE PROPRIETARY TO AND THE PROPERTY OF CELESCO TRANSDUCER PRODUCTS INC. AND SHALL NOT BE USED, DUPLICATED, DISCLOSED OR TRANSFERRED, IN WHOLE OR IN PART, FOR ANY PURPOSE, WITHOUT THE EXPRESS PRIOR WRITTEN CONSENT OF CELESCO TRANSDUCER PRODUCTS INC.

THIRD ANGLE PROJECTION

celesco
 Transducer Products Inc.
 20630 Plummer St
 Chatsworth, CA, 91311
 Tel:(818)701-2750 Fax:(818)701-2799
 www.celesco.com

MT3A ASSEMBLY

APPROVALS	DATE	SIZE	CODE IDENT. NO/DWG. NO.	REV
EGARCIA	1/16/2009	B	52158	PS-158
CHKD				B

DO NOT SCALE DRAWING

SCALE: 1:6 SHEET 2 OF 3



DRAWING CHANGE NOTICE

DRAWING NO.

PS-158

REV.

B

SHEET 3 OF 3

DISPOSITION OF PARTS

PART NAME
MT3A ASSEMBLYDCN NO.
7120

MUST CONFORM

IN FABRICATION

X**ENGINEERING APPROVAL**

COPIES TO

YES

NO

IN STOCK

X

SIGNATURE

ENGINEERING

X

BOXED PARTS

X

PREPARED BY

E. GARCIA

8/24/2009

INSPECTION

X

IN ASSEMBLIES

X

CHECKED BY



8/25/09

PLANNING

X

IN BOND

X

APPROVED

MSK

8/25/09

PRODUCTION

X

CUSTOMER REWORK

X

GEN MGR

X**X**

PURCHASING

X

DCR NO. (IF APPLICABLE)

0000

SALES

X

CHANGE NO

REVISED OR CHANGED FROM

SHEET / ZONE

ADDED OR CHANGED TO

1

1 / A1

ADDED TABLE 1

2

REMOVED VIEW OF ELECTRICAL CABLE OPTION

1

CONNECTOR OPTION NOT AVAILABLE WITH MT3A

3

2

ADDED NEW SHEET 2 - ACCEPTANCE TEST PROCEDURE

NOTES

ADDED TABLE TO DOCUMENT AVAILABILITY OF AL AND PLASTIC HOUSING.
ACCEPTANCE TEST PROCEDURE REQUIRED DOCUMENTATION

REMARKS: