

# PT8600 installation instructions

1. Attach encoder as described below.
2. Mount transducer via the 4 mounting feet to a flat solid surface.
3. Connect measuring cable limiting misalignment to 10°.

## ENCODER MOUNTING INSTRUCTIONS

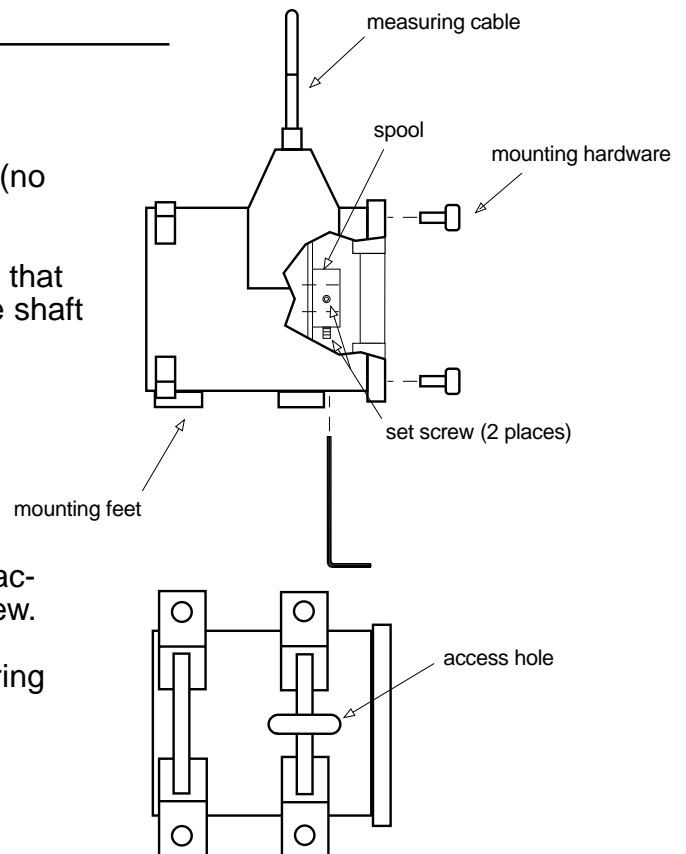
1. Remove encoder mounting hardware.
2. Insert shaft of encoder into spool. With your hands (no tools), push encoder till flush with mounting plate.

**CAUTION:** Fit should be snug but not tight. Ensure that set screws are not preventing insertion. Never force shaft into spool.

3. Fasten encoder to flange with hardware provided.
4. Extend cable 10 times to set spool on the encoder shaft.
5. Extend measuring cable until set screw aligns with access hole and fasten screw. Repeat for second screw.

**CAUTION:** Do not extend cable at severe angle during this procedure.

6. Assembly is now complete.



## COMPLETED ASSEMBLY

