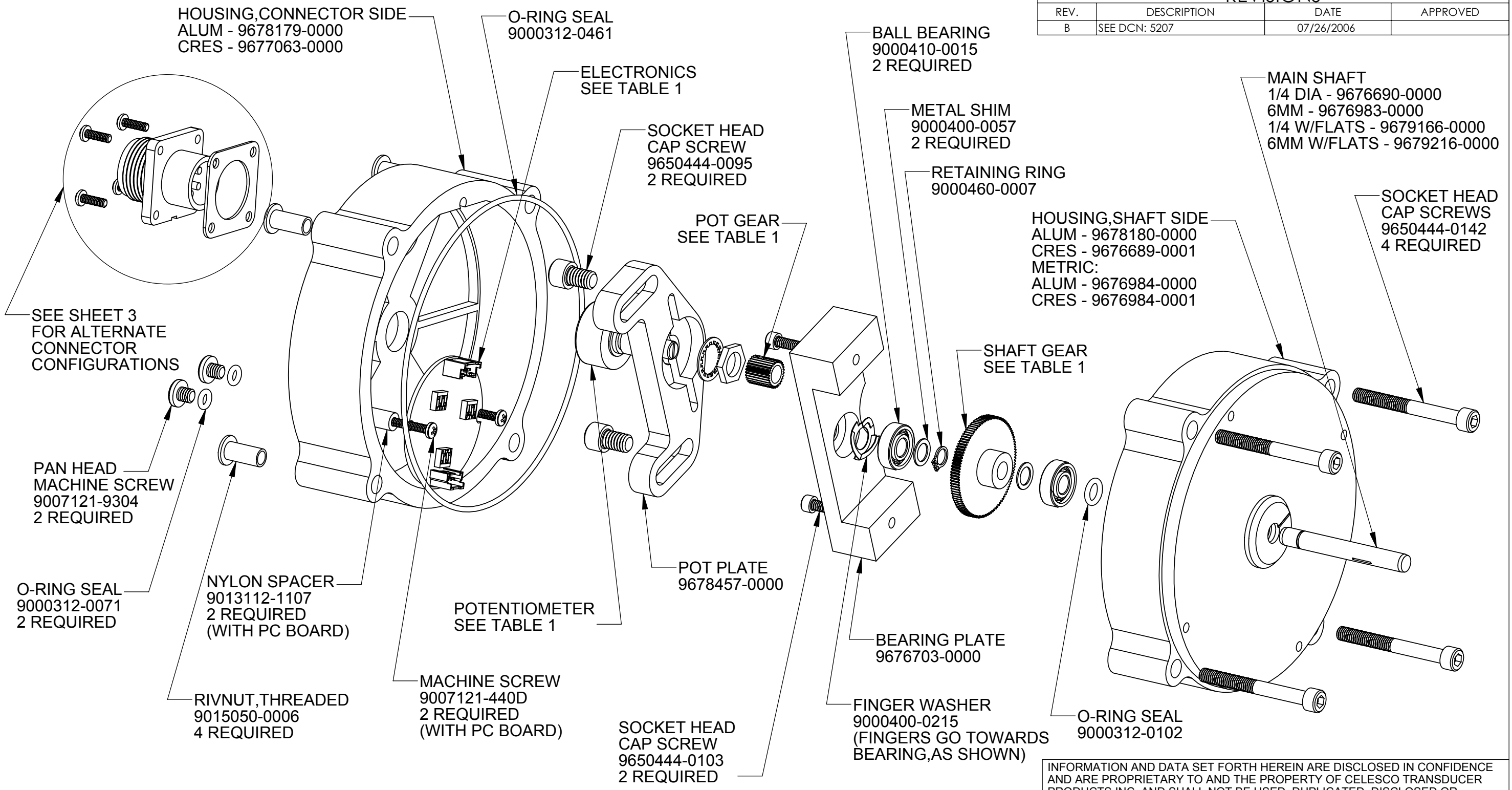


REVISIONS

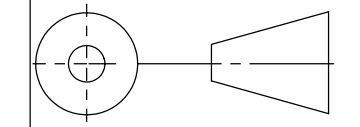
REV.	DESCRIPTION	DATE	APPROVED
B	SEE DCN: 5207	07/26/2006	

A  
B  
C  
D  
E  
F  
G



INFORMATION AND DATA SET FORTH HEREIN ARE DISCLOSED IN CONFIDENCE AND ARE PROPRIETARY TO AND THE PROPERTY OF CELESCO TRANSDUCER PRODUCTS INC. AND SHALL NOT BE USED, DUPLICATED, DISCLOSED OR TRANSFERRED, IN WHOLE OR IN PART, FOR ANY PURPOSE, WITHOUT THE EXPRESS PRIOR WRITTEN CONSENT OF CELESCO TRANSDUCER PRODUCTS INC.

THIRD ANGLE PROJECTION



**celesco** 20630 Plummer St  
Chatsworth, CA. 91311  
Tel: (818) 701-2750 Fax: (818) 701-2799  
www.celesco.com  
Transducer Products Inc.

TITLE  
**ASSEMBLY DRAWING  
RT9000 SERIES**

APPROVALS DATE

DRAWN M.KRATOFIL 08/08/2001  
CHKD

SIZE CODE IDENT. NO DWG. NO. REV  
**B 52158 620989 B**

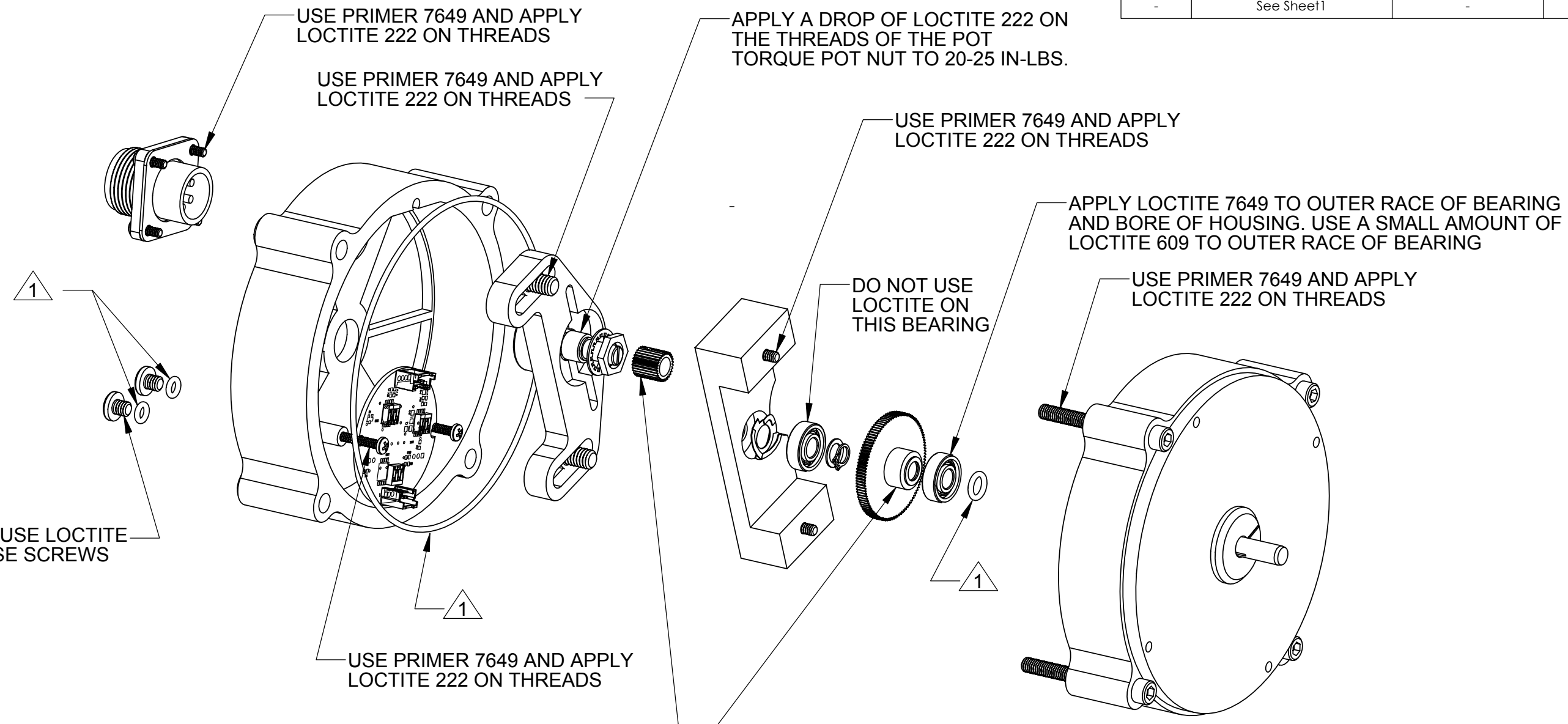
DO NOT SCALE DRAWING

SCALE: 1:2 SHEET 1 OF 5

NOTES: UNLESS OTHERWISE SPECIFIED

REVISIONS			
REV.	DESCRIPTION	DATE	APPROVED
-	See Sheet1	-	-

A  
B  
C  
D  
E  
F  
G



**STEEL GEAR:**  
APPLY PRIMER 7649 TO SET SCREW AND GEAR THEN APPLY LOCTITE 222 TO THREADS

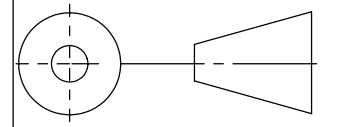
**PLASTIC GEAR:**  
APPLY 1 DROP OF LOCTITE 425 INTO THE THREADS OF PLASTIC GEAR. THEN INSERT THE SET SCREW INTO GEAR. TIGHTEN 1/4 TO 1/2 TURN PAST INITIAL CONTACT

1 All o-rings to be entirely coated using Parker Super-lube o-ring lubricant.

NOTES: unless otherwise specified

INFORMATION AND DATA SET FORTH HEREIN ARE DISCLOSED IN CONFIDENCE AND ARE PROPRIETARY TO AND THE PROPERTY OF CELESCO TRANSDUCER PRODUCTS INC. AND SHALL NOT BE USED, DUPLICATED, DISCLOSED OR TRANSFERRED, IN WHOLE OR IN PART, FOR ANY PURPOSE, WITHOUT THE EXPRESS PRIOR WRITTEN CONSENT OF CELESCO TRANSDUCER PRODUCTS INC.

THIRD ANGLE PROJECTION



**celesco** 20630 Plummer St  
Chatsworth, CA. 91311  
Tel: (818) 701-2750 Fax: (818) 701-2799  
www.celesco.com

TITLE  
**ASSEMBLY DRAWING  
RT9000 SERIES**

APPROVALS	DATE
-----------	------

DRAWN	M.KRATOFIL	08/08/2001
CHKD		

SIZE	CODE IDENT. NO	DWG. NO.	REV
<b>B</b>	<b>52158</b>	<b>620989</b>	<b>B</b>

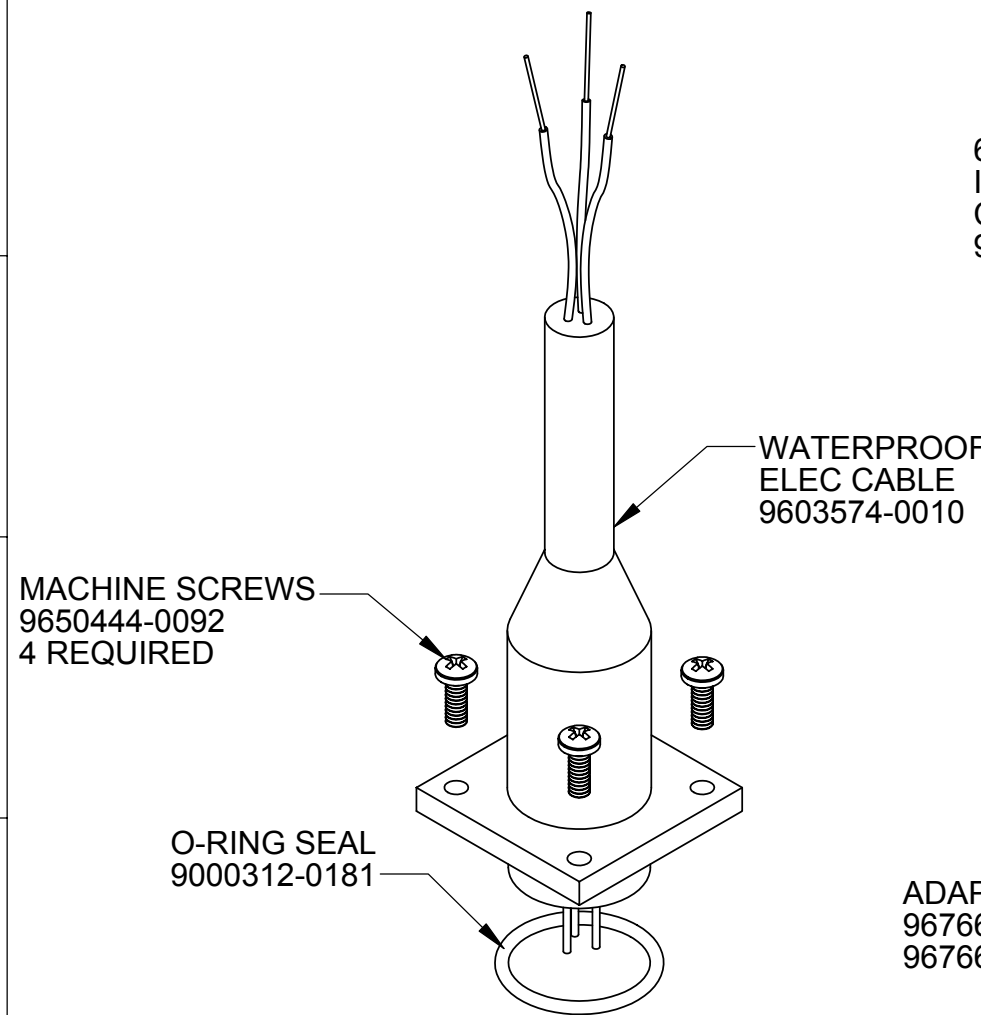
DO NOT SCALE DRAWING

SCALE: 1:2 SHEET 2 OF 5

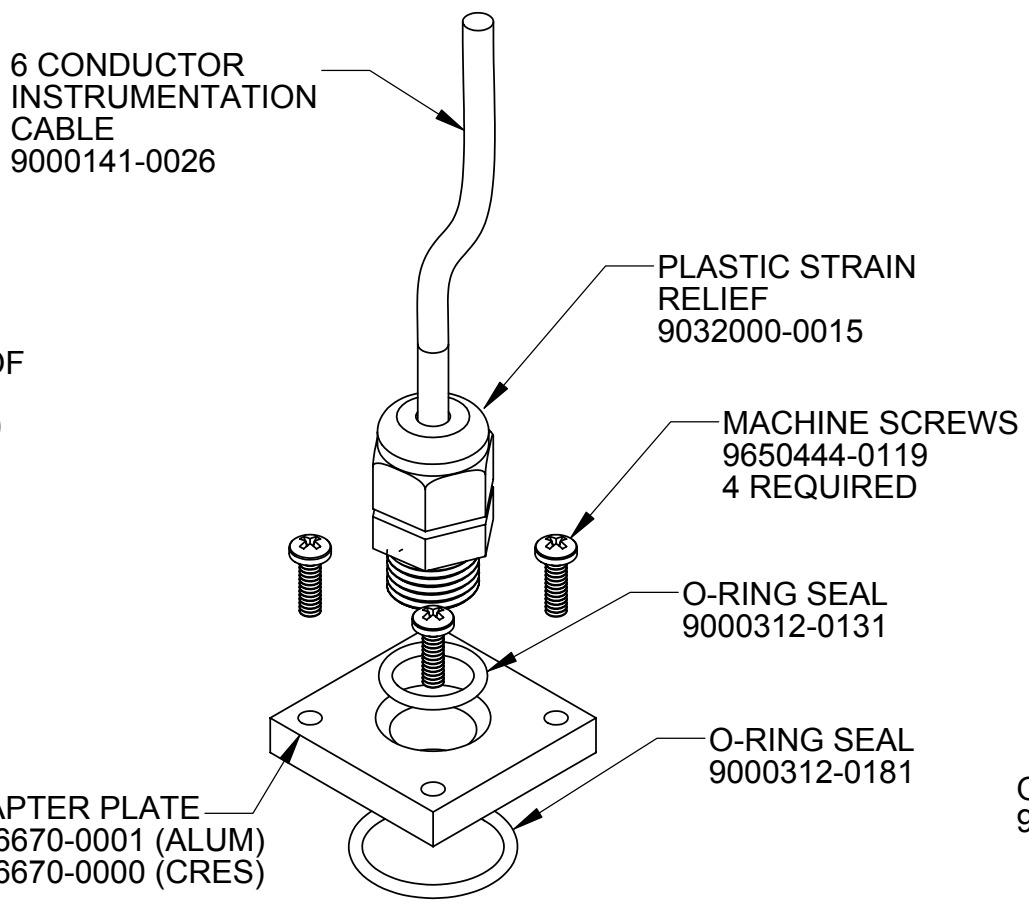
REVISIONS

REV.	DESCRIPTION	DATE	APPROVED
-	See Sheet1	-	-

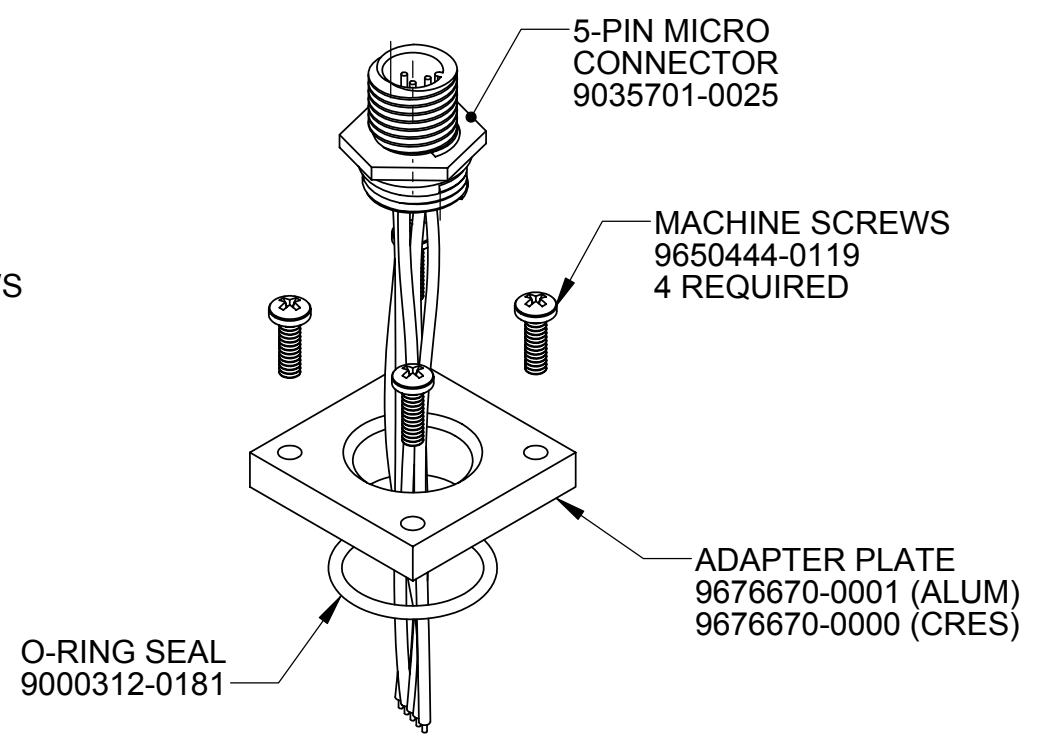
A  
B  
C  
D  
E  
F  
G



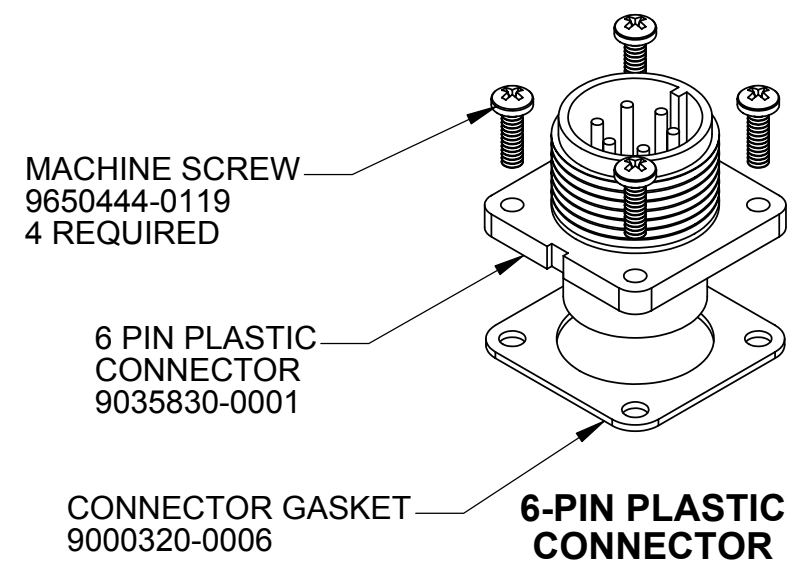
**WATERPROOF ELECTRICAL CABLE**



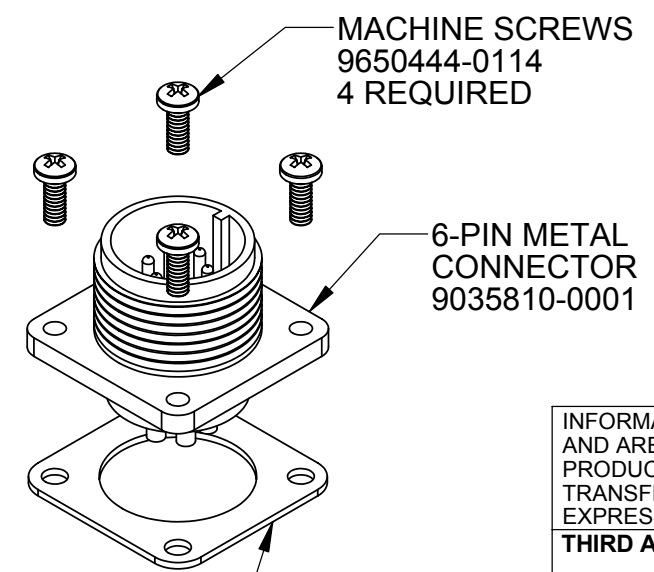
**INSTRUMENTATION CABLE**



**5-PIN MICRO CONNECTOR**



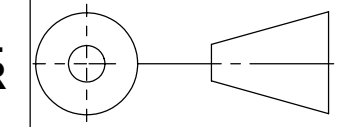
**6-PIN PLASTIC CONNECTOR**



**6-PIN METAL CONNECTOR**

INFORMATION AND DATA SET FORTH HEREIN ARE DISCLOSED IN CONFIDENCE AND ARE PROPRIETARY TO AND THE PROPERTY OF CELESCO TRANSDUCER PRODUCTS INC. AND SHALL NOT BE USED, DUPLICATED, DISCLOSED OR TRANSFERRED, IN WHOLE OR IN PART, FOR ANY PURPOSE, WITHOUT THE EXPRESS PRIOR WRITTEN CONSENT OF CELESCO TRANSDUCER PRODUCTS INC.

THIRD ANGLE PROJECTION



20630 Plummer St  
Chatsworth, CA. 91311  
Tel: (818) 701-2750 Fax: (818) 701-2799  
www.celesco.com

**celesco**  
Transducer Products Inc.

TITLE  
**ASSEMBLY DRAWING  
RT9000 SERIES**

APPROVALS DATE

DRAWN M.KRATOFIL 08/08/2001  
CHKD

SIZE	CODE IDENT. NO	DWG. NO.	REV
<b>B</b>	<b>52158</b>	<b>620989</b>	<b>B</b>

DO NOT SCALE DRAWING

SCALE: 1:2 SHEET 3 OF 5

REVISIONS

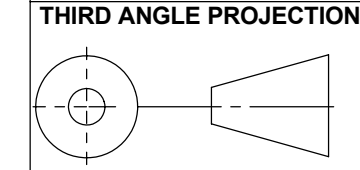
REV.	DESCRIPTION	DATE	APPROVED
-	See Sheet1	-	-

A  
B  
C  
D  
E  
F  
G

TABLE 1							
		RT9101	RT9420 **	RT9510 **	RT9232 **	RT9CN *	RT9DN *
ELECTRONICS	2 WIRE 4-20 mA	---	9604068-0001	---	---	---	---
	3 WIRE 4-20 mA	---	9603662-0000	---	---	---	---
	0-10 VDC	---	---	9604070-0001	---	---	---
	0-5 VDC	---	---	9604094-0001	---	---	---
	2 mV/V BRIDGE	9603980-0016	---	---	---	---	---
	0-30 mVADJUSTABLE BRIDGE	9603980-0013	---	---	---	---	---
	RS232	---	---	---	9604014-0001	---	---
	CAN BUS SAE J1939	---	---	---	---	9604012-0001	---
	DEVICE NET ISO 11898	---	---	---	---	---	9603945-0001
GEARS AND POTS	RANGE	POT GEAR	SHAFT GEAR	POT 500 OHMS	POT 1K OHMS	POT 5K OHMS	POT 10K OHMS
	1/4 TURN	9678770-0120	9000440-0033	9083000-0052	9083000-0053	9080000-0001	9080000-0003
	1/2 TURN	9678770-0110	9000440-0030	9083000-0052	9083000-0053	9080000-0001	9080000-0003
	1 TURN	9000440-0022	9000440-0010	9083000-0052	9083000-0053	9080000-0001	9080000-0003
	2 TURN	9678770-0110	9000440-0017	9083000-0052	9083000-0053	9080000-0001	9080000-0003
	3 TURN	9678770-0120	9000440-0006	9083000-0052	9083000-0053	9080000-0001	9080000-0003
	5 TURN	9000440-0022	9000440-0010	9085000-0004	9085000-0011	9085000-0013	9085000-0001
	10 TURN	9000440-0022	9000440-0010	9085000-0003	9085000-0006	9085000-0010	9085000-0002
	20 TURN	9678770-0110	9000440-0025	9085000-0003	9085000-0006	9085000-0010	9085000-0002
	30 TURN	9678770-0120	9000440-0041	9085000-0003	9085000-0006	9085000-0010	9085000-0002
50 TURN	9678770-0130	9000440-0031	9085000-0003	9085000-0006	9085000-0010	9085000-0002	

\* ONLY AVAILABLE WITH 5K OHM POTENTIOMETER  
 \*\* ONLY AVAILABLE WITH 500 OHM POTENTIOMETER

INFORMATION AND DATA SET FORTH HEREIN ARE DISCLOSED IN CONFIDENCE AND ARE PROPRIETARY TO AND THE PROPERTY OF CELESCO TRANSDUCER PRODUCTS INC. AND SHALL NOT BE USED, DUPLICATED, DISCLOSED OR TRANSFERRED, IN WHOLE OR IN PART, FOR ANY PURPOSE, WITHOUT THE EXPRESS PRIOR WRITTEN CONSENT OF CELESCO TRANSDUCER PRODUCTS INC.



**celesco** 20630 Plummer St  
 Chatsworth, CA. 91311  
 Tel: (818) 701-2750 Fax: (818) 701-2799  
 www.celesco.com  
 Transducer Products Inc.

APPROVALS		DATE	TITLE	
DRAWN	M.KRATOFIL	08/08/2001	ASSEMBLY DRAWING RT9000 SERIES	
CHKD			SIZE	CODE IDENT. NO
			<b>B</b>	<b>52158</b>
			DWG. NO.	REV
			<b>620989</b>	<b>B</b>
DO NOT SCALE DRAWING			SCALE: 1:1	SHEET 4 OF 5

